



HELLENIC TRANSMISSION
SYSTEM OPERATOR

TRANSMISSION SYSTEM ENERGY BALANCE MONTHLY
REPORT

Info :A. Grassou +30 210 9466905

	NOVEMBER 2008	COMPARED TO LAST YEAR(%)	JANUARY - NOVEMBER 2008	COMPARED TO LAST YEAR(%)
PRODUCTION AND EXCHANGE BALANCE (MWh)				
TOTAL PRODUCTION & EXCHANGE BALANCE	4.367.181	-2,23	52.144.465	1,03
TOTAL NET PRODUCTION	3.919.908	-8,61	46.996.885	-1,01
CLASSIFICATION				
LIGNITE	2.531.771	2,71	27.165.746	-4,62
OIL	331.041	22,87	3.173.601	5,63
NATURAL GAS	760.948	-35,49	12.535.583	4,99
HYDRO	181.571	-27,87	2.748.443	-4,13
*RENEWABLE AND OTHER SOURCES	114.577	-7,30	1.373.512	16,13
EXCHANGE BALANCE	447.273	152,07	5.147.580	24,37
IMPORTS	639.622		6.922.104	
from TURKEY	0		0	
from ALBANIA	25		431	
from FYROM	120.788		999.093	
from BULGARIA	397.987		4.357.063	
from ITALY	120.822		1.565.517	
EXPORTS	192.349		1.774.524	
to TURKEY	0		29.791	
to ALBANIA	177.606		1.488.274	
to FYROM	1.906		94.561	
to BULGARIA	0		0	
to ITALY	12.837		161.898	

CONSUMPTION (MWh)					
TOTAL CONSUMPTION	4.367.181	-2,23	52.144.465	1,03	
NET CONSUMPTION	4.263.068	-2,82	51.058.488	0,95	
PUMPING	104.113		1.085.977		
CLASSIFICATION					
CONSUMPTION OF ELECTRICITY SECTOR	14.134		139.579		
HV INDUSTRIAL CUSTOMERS	599.957	-5,41	7.013.521	-1,98	
DISTRIBUTION NETWORK	3.459.496	-3,07	41.851.935	1,57	
** AUTOPRODUCERS	0		0		
PUMPING	104.113		1.085.977		
MINES	80.762	-4,50	876.321	-10,77	
SYSTEM LOSSES	108.719		1.177.132		
SYSTEM POWER (MW)					
SYSTEM INSTANT PEAK LOAD	8.031	***	10.393	***	
date / time of peak load	28/11/08	19:00	22/07/08	15:00	
Athens (ROUF) temperature at peak time (°C)	18		38		
HOURLY AVERAGE LOAD IN ATTIKI	2675		3252		

NOTE:

- * Includes only the HV substations
- ** They are included in the HV INDUSTRIAL CUSTOMERS
- *** Value from SCADA SYSTEM



HELLENIC TRANSMISSION
SYSTEM OPERATOR

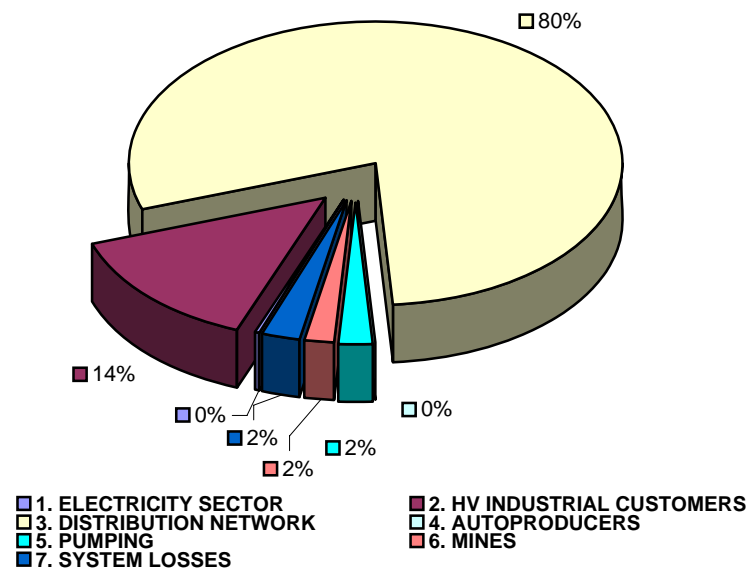
TOTAL ELECTRICITY CONSUMPTION

(MWH)

Month : NOVEMBER 2008

TOTAL ELECTRICITY CONSUMPTION	MONTHLY TOTALS	(%)
CLASSIFICATION	4.367.181	100,00
1. ELECTRICITY SECTOR	14.134	0,32
2. HV INDUSTRIAL CUSTOMERS	599.957	13,74
3. DISTRIBUTION NETWORK	3.459.496	79,22
4. AUTOPRODUCERS	0	0,00
5. PUMPING	104.113	2,38
6. MINES	80.762	1,85
7. SYSTEM LOSSES	108.719	2,49

MONTHLY ELECTRICITY CONSUMPTION



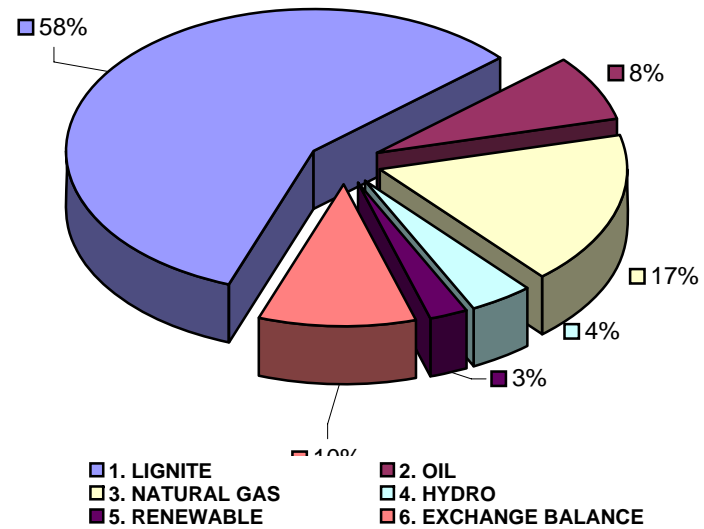


MONTHLY ELECTRICITY PRODUCTION & EXCHANGE BALANCE
(MWH)

Month : NOVEMBER 2008

TOTAL PRODUCTION & INTERCONNECTIONS	MONTH TOTALS	(%)
TOT.PROD. & INTERCON.	4.367.181	100,00
1. LIGNITE	2.531.771	57,97
2. OIL	331.041	7,58
3. NATURAL GAS	760.948	17,42
4. HYDRO	181.571	4,16
5. RENEWABLE	114.577	2,62
6. EXCHANGE BALANCE	447.273	10,24

MONTHLY ELECTRICITY PRODUCTION





MONTHLY PEAK LOAD ANALYSIS

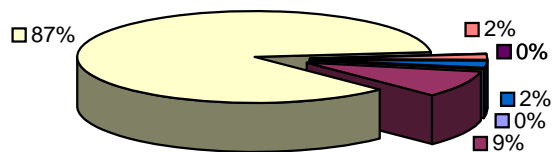
DAY : 20081128

Hourly average peak load			
MW	7960	Hour	19,00

ELECTRICITY CONSUMPTION DURING PEAK LOAD		
TOTAL	7960	100,00
1. ELECTRICITY SECTOR	16	0,20
2. HV INDUSTRIAL CUSTOMERS	753	9,46
3. DISTRIBUTION NETWORK	6848	86,03
4. AUTOPRODUCERS	0	0,00
5. PUMPING	0	0,00
6. MINES	154	1,93
7. SYSTEM LOSSES	189	2,37

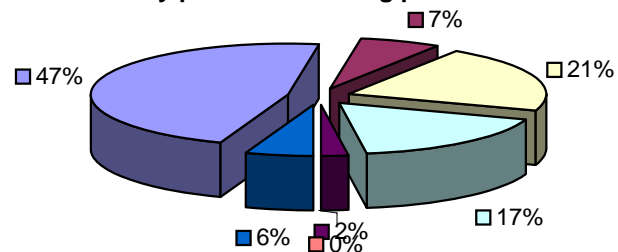
ELECTRICITY PRODUCTION DURING PEAK LOAD		
TOTAL	7960	100,00
1. LIGNITE	3734	46,91
2. OIL	538	6,76
3. NATURAL GAS	1682	21,13
4. HYDRO	1381	17,35
5. RENEWABLE	184	2,31
6. OTHER SOURCES	1	0,01
7. EXCHANGE BALANCE	440	5,53

Electricity consumption during peak load



- 1. ELECTRICITY SECTOR
- 2. HV INDUSTRIAL CUSTOMERS
- 3. DISTRIBUTION NETWORK
- 4. AUTOPRODUCERS
- 5. PUMPING
- 6. MINES
- 7. SYSTEM LOSSES

Electricity production during peak load



- 1. LIGNITE
- 2. OIL
- 3. NATURAL GAS
- 4. HYDRO
- 5. RENEWABLE
- 6. OTHER SOURCES
- 7. EXCHANGE BALANCE