



TRANSMISSION SYSTEM ENERGY BALANCE MONTHLY
REPORT

Info :A. Grassou +30 210 9466905

	OCTOBER 2008	COMPARED TO LAST YEAR(%)	JANUARY - OCTOBER 2008	COMPARED TO LAST YEAR(%)
PRODUCTION AND EXCHANGE BALANCE (MWh)				
TOTAL PRODUCTION & EXCHANGE BALANCE	4.342.745	-2,44	47.777.284	1,33
TOTAL NET PRODUCTION	4.095.230	-1,88	43.076.977	-0,25
CLASSIFICATION				
LIGNITE	2.568.679	4,87	24.633.975	-5,32
OIL	319.144	-6,93	2.842.560	3,93
NATURAL GAS	895.942	-19,01	11.774.635	9,43
HYDRO	164.194	-2,31	2.566.872	-1,84
*RENEWABLE AND OTHER SOURCES	147.271	37,47	1.258.935	18,88
EXCHANGE BALANCE	247.515	-10,81	4.700.307	18,64
IMPORTS	469.771		6.282.482	
from TURKEY	0		0	
from ALBANIA	3		406	
from FYROM	37.206		878.305	
from BULGARIA	374.337		3.959.076	
from ITALY	58.225		1.444.695	
EXPORTS	222.256		1.582.175	
to TURKEY	0		29.791	
to ALBANIA	156.919		1.310.668	
to FYROM	30.117		92.655	
to BULGARIA	0		0	
to ITALY	35.220		149.061	

CONSUMPTION (MWh)					
TOTAL CONSUMPTION	4.342.745	-2,44	47.777.284	1,33	
NET CONSUMPTION	4.238.171	-2,48	46.795.420	1,30	
PUMPING	104.574		981.864		
CLASSIFICATION					
CONSUMPTION OF ELECTRICITY SECTOR	11.660		125.445		
HV INDUSTRIAL CUSTOMERS	627.894	-7,54	6.413.564	-1,64	
DISTRIBUTION NETWORK	3.413.576	-1,74	38.392.439	2,01	
** AUTOPRODUCERS	0		0		
PUMPING	104.574		981.864		
MINES	80.769	-3,93	795.559	-11,37	
SYSTEM LOSSES	104.272		1.068.413		
SYSTEM POWER (MW)					
SYSTEM INSTANT PEAK LOAD	7.650	***	10.393	***	
date / time of peak load	30/10/08	20:00	22/07/08	15:00	
Athens (ROUF) temperature at peak time (°C)	19		38		
HOURLY AVERAGE LOAD IN ATTIKI	2490		3252		

NOTE:

- * Includes only the HV substations
- ** They are included in the HV INDUSTRIAL CUSTOMERS
- *** Value from SCADA SYSTEM



HELLENIC TRANSMISSION
SYSTEM OPERATOR

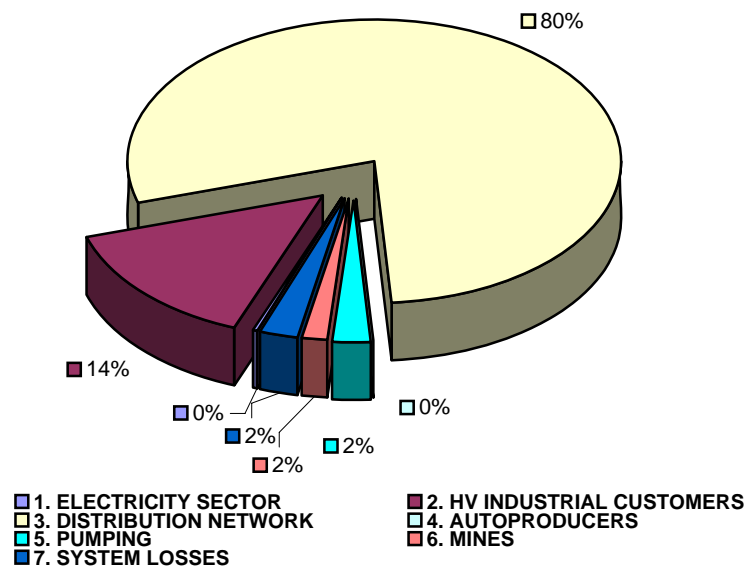
TOTAL ELECTRICITY CONSUMPTION

(MWH)

Month : OCTOBER 2008

TOTAL ELECTRICITY CONSUMPTION	MONTHLY TOTALS	(%)
CLASSIFICATION	4.342.745	100,00
1. ELECTRICITY SECTOR	11.660	0,27
2. HV INDUSTRIAL CUSTOMERS	627.894	14,46
3. DISTRIBUTION NETWORK	3.413.576	78,60
4. AUTOPRODUCERS	0	0,00
5. PUMPING	104.574	2,41
6. MINES	80.769	1,86
7. SYSTEM LOSSES	104.272	2,40

MONTHLY ELECTRICITY CONSUMPTION



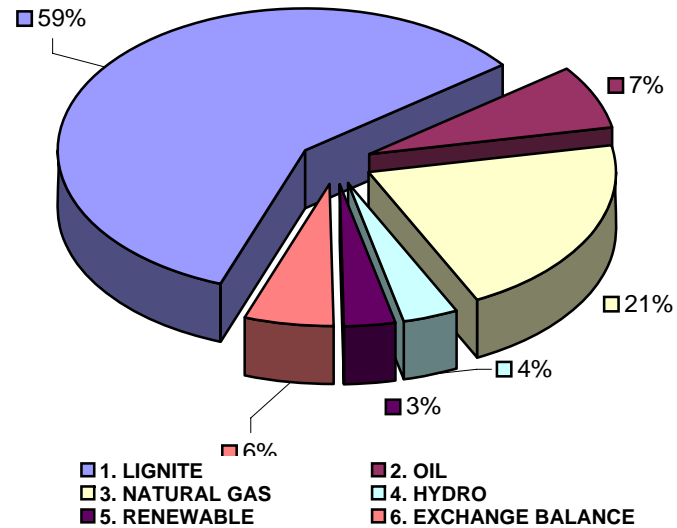


MONTHLY ELECTRICITY PRODUCTION & EXCHANGE BALANCE
(MWH)

Month : OCTOBER 2008

TOTAL PRODUCTION & INTERCONNECTIONS	MONTH TOTALS	(%)
TOT.PROD. & INTERCON.	4.342.745	100,00
1. LIGNITE	2.568.679	59,15
2. OIL	319.144	7,35
3. NATURAL GAS	895.942	20,63
4. HYDRO	164.194	3,78
5. RENEWABLE	147.271	3,39
6. EXCHANGE BALANCE	247.515	5,70

MONTHLY ELECTRICITY PRODUCTION





MONTHLY PEAK LOAD ANALYSIS

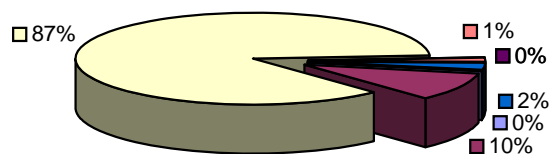
DAY : 20081030

Hourly average peak load			
MW	7556	Hour	20,00

ELECTRICITY CONSUMPTION DURING PEAK LOAD		
TOTAL	7556	100,00
1. ELECTRICITY SECTOR	11	0,15
2. HV INDUSTRIAL CUSTOMERS	769	10,18
3. DISTRIBUTION NETWORK	6478	85,73
4. AUTOPRODUCERS	0	0,00
5. PUMPING	0	0,00
6. MINES	110	1,46
7. SYSTEM LOSSES	188	2,49

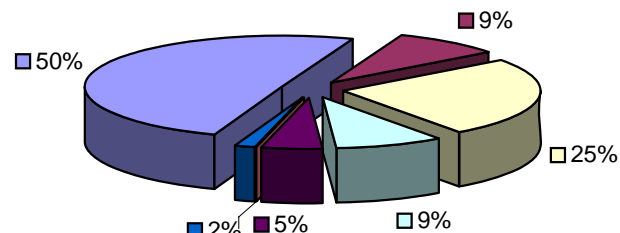
ELECTRICITY PRODUCTION DURING PEAK LOAD		
TOTAL	7556	100,00
1. LIGNITE	3793	50,20
2. OIL	681	9,01
3. NATURAL GAS	1916	25,36
4. HYDRO	659	8,72
5. RENEWABLE	376	4,98
6. OTHER SOURCES	1	0,01
7. EXCHANGE BALANCE	130	1,72

Electricity consumption during peak load



- 1. ELECTRICITY SECTOR
- 2. HV INDUSTRIAL CUSTOMERS
- 3. DISTRIBUTION NETWORK
- 4. AUTOPRODUCERS
- 5. PUMPING
- 6. MINES
- 7. SYSTEM LOSSES

Electricity production during peak load



- 1. LIGNITE
- 2. OIL
- 3. NATURAL GAS
- 4. HYDRO
- 5. RENEWABLE
- 6. OTHER SOURCES
- 7. EXCHANGE BALANCE