



HELLENIC TRANSMISSION
SYSTEM OPERATOR

TRANSMISSION SYSTEM ENERGY BALANCE MONTHLY
REPORT

Info :A. Grassou +30 210 9466905

	SEPTEMBER 2008	COMPARED TO LAST YEAR(%)	JANUARY - SEPTEMBER 2008	COMPARED TO LAST YEAR(%)
PRODUCTION AND EXCHANGE BALANCE (MWh)				
TOTAL PRODUCTION & EXCHANGE BALANCE	4.659.172	4,40	43.434.539	1,72
TOTAL NET PRODUCTION	4.235.386	3,54	38.981.747	-0,08
CLASSIFICATION				
LIGNITE	2.476.681	-5,15	22.065.296	-6,38
OIL	290.849	5,97	2.523.416	5,50
NATURAL GAS	1.150.837	24,19	10.878.693	12,69
HYDRO	216.648	21,59	2.402.678	-1,82
*RENEWABLE AND OTHER SOURCES	100.371	0,31	1.111.664	16,78
EXCHANGE BALANCE	423.786	13,80	4.452.792	20,84
IMPORTS	579.969		5.812.711	
from TURKEY	0		0	
from ALBANIA	10		403	
from FYROM	55.374		841.099	
from BULGARIA	380.730		3.584.739	
from ITALY	143.855		1.386.470	
EXPORTS	156.183		1.359.919	
to TURKEY	0		29.791	
to ALBANIA	134.103		1.153.749	
to FYROM	16.271		62.538	
to BULGARIA	0		0	
to ITALY	5.809		113.841	

CONSUMPTION (MWh)					
TOTAL CONSUMPTION	4.659.172	4,40	43.434.539	1,72	
NET CONSUMPTION	4.561.325	4,43	42.557.249	1,69	
PUMPING	97.847		877.290		
CLASSIFICATION					
CONSUMPTION OF ELECTRICITY SECTOR	10.788		113.785		
HV INDUSTRIAL CUSTOMERS	649.903	-2,25	5.785.670	-0,96	
DISTRIBUTION NETWORK	3.713.175	6,11	34.978.863	2,39	
** AUTOPRODUCERS	0		0		
PUMPING	97.847		877.290		
MINES	79.276	-8,25	714.790	-12,14	
SYSTEM LOSSES	108.183		964.141		
SYSTEM POWER (MW)					
SYSTEM INSTANT PEAK LOAD	9.119	***	10.393	***	
date / time of peak load	09/09/08	14:00	22/07/08	15:00	
Athens (ROUF) temperature at peak time (°C)	35		38		
HOURLY AVERAGE LOAD IN ATTIKI	3071		3252		

NOTE:

- * Includes only the HV substations
- ** They are included in the HV INDUSTRIAL CUSTOMERS
- *** Value from SCADA SYSTEM



HELLENIC TRANSMISSION
SYSTEM OPERATOR

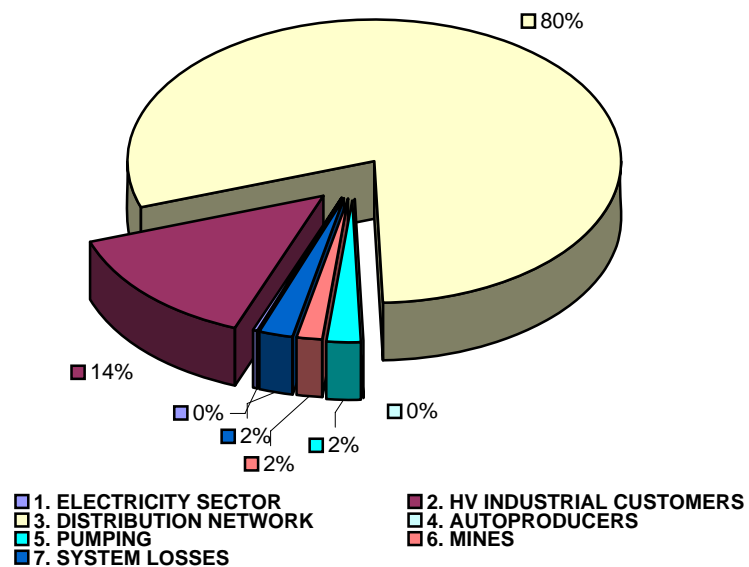
TOTAL ELECTRICITY CONSUMPTION

(MWH)

Month : SEPTEMBER 2008

TOTAL ELECTRICITY CONSUMPTION	MONTHLY TOTALS	(%)
CLASSIFICATION	4.659.172	100,00
1. ELECTRICITY SECTOR	10.788	0,23
2. HV INDUSTRIAL CUSTOMERS	649.903	13,95
3. DISTRIBUTION NETWORK	3.713.175	79,70
4. AUTOPRODUCERS	0	0,00
5. PUMPING	97.847	2,10
6. MINES	79.276	1,70
7. SYSTEM LOSSES	108.183	2,32

MONTHLY ELECTRICITY CONSUMPTION



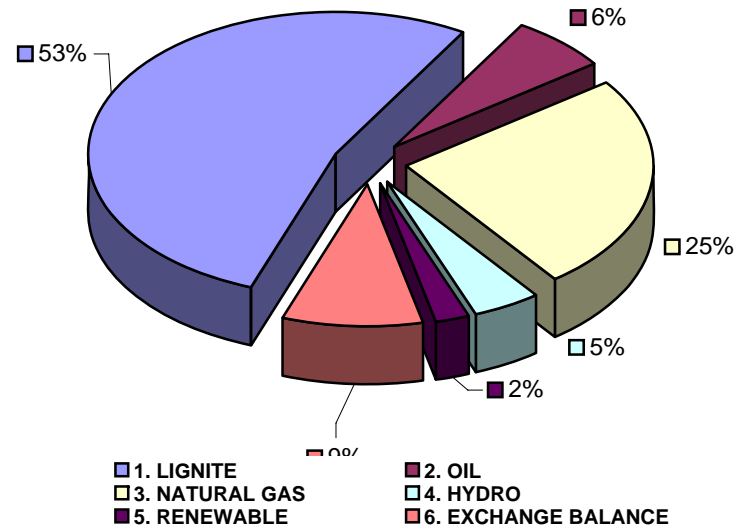


MONTHLY ELECTRICITY PRODUCTION & EXCHANGE BALANCE
(MWH)

Month : SEPTEMBER 2008

TOTAL PRODUCTION & INTERCONNECTIONS	MONTH TOTALS	(%)
TOT.PROD. & INTERCON.	4.659.172	100,00
1. LIGNITE	2.476.681	53,16
2. OIL	290.849	6,24
3. NATURAL GAS	1.150.837	24,70
4. HYDRO	216.648	4,65
5. RENEWABLE	100.371	2,15
6. EXCHANGE BALANCE	423.786	9,10

MONTHLY ELECTRICITY PRODUCTION





MONTHLY PEAK LOAD ANALYSIS

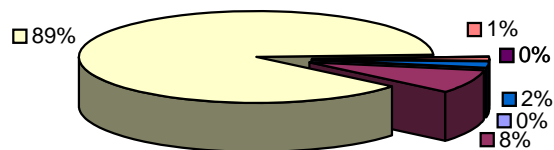
DAY : 20080909

Hourly average peak load			
MW	8971	Hour	14,00

ELECTRICITY CONSUMPTION DURING PEAK LOAD		
TOTAL	8971	100,00
1. ELECTRICITY SECTOR	5	0,06
2. HV INDUSTRIAL CUSTOMERS	752	8,38
3. DISTRIBUTION NETWORK	7894	87,99
4. AUTOPRODUCERS	0	0,00
5. PUMPING	0	0,00
6. MINES	109	1,22
7. SYSTEM LOSSES	211	2,35

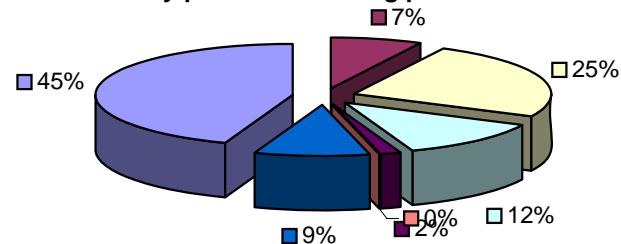
ELECTRICITY PRODUCTION DURING PEAK LOAD		
TOTAL	8971	100,00
1. LIGNITE	3985	44,42
2. OIL	669	7,46
3. NATURAL GAS	2215	24,69
4. HYDRO	1114	12,42
5. RENEWABLE	140	1,56
6. OTHER SOURCES	1	0,01
7. EXCHANGE BALANCE	847	9,44

Electricity consumption during peak load



- 1. ELECTRICITY SECTOR
- 2. HV INDUSTRIAL CUSTOMERS
- 3. DISTRIBUTION NETWORK
- 4. AUTOPRODUCERS
- 5. PUMPING
- 6. MINES
- 7. SYSTEM LOSSES

Electricity production during peak load



- 1. LIGNITE
- 2. OIL
- 3. NATURAL GAS
- 4. HYDRO
- 5. RENEWABLE
- 6. OTHER SOURCES
- 7. EXCHANGE BALANCE