



TRANSMISSION SYSTEM ENERGY BALANCE MONTHLY
REPORT

Info :A. Grassou +30 210 9466905

	JUNE 2008	COMPARED TO LAST YEAR(%)	JANUARY - JUNE 2008	COMPARED TO LAST YEAR(%)
PRODUCTION AND EXCHANGE BALANCE (MWh)				
TOTAL PRODUCTION & EXCHANGE BALANCE	5.062.128	2,33	27.499.428	1,57
TOTAL NET PRODUCTION	4.515.271	2,97	24.657.902	-1,01
CLASSIFICATION				
LIGNITE	2.482.415	-5,10	13.835.372	-8,17
OIL	289.491	-5,98	1.573.446	6,90
NATURAL GAS	1.277.317	19,06	7.061.857	11,72
HYDRO	352.301	11,03	1.472.388	1,86
*RENEWABLE AND OTHER SOURCES	113.747	60,24	714.839	18,15
EXCHANGE BALANCE	546.857	-2,66	2.841.526	31,39
IMPORTS	654.584		3.817.837	
from TURKEY	0		0	
from ALBANIA	361		391	
from FYROM	101.585		564.433	
from BULGARIA	414.886		2.251.823	
from ITALY	137.752		1.001.190	
EXPORTS	107.727		976.311	
to TURKEY	0		29.791	
to ALBANIA	92.655		807.559	
to FYROM	2.009		41.558	
to BULGARIA	0		0	
to ITALY	13.063		97.403	

CONSUMPTION (MWh)						
TOTAL CONSUMPTION	5.062.128	2,33	27.499.428	1,57		
NET CONSUMPTION	4.970.957	2,20	26.908.791	1,60		
PUMPING	91.171		590.637			
CLASSIFICATION						
CONSUMPTION OF ELECTRICITY SECTOR	12.748		82.940			
HV INDUSTRIAL CUSTOMERS	639.988	-3,85	3.870.839	-2,38		
DISTRIBUTION NETWORK	4.126.131	3,54	21.890.496	2,56		
** AUTOPRODUCERS	0		0			
PUMPING	91.171		590.637			
MINES	78.286	-10,72	464.901	-15,75		
SYSTEM LOSSES	113.804		599.615			
SYSTEM POWER (MW)						
SYSTEM INSTANT PEAK LOAD	10.175	***	10.175	***		
date / time of peak load	26/06/08	15:00	26/06/08	15:00		
Athens (ROUF) temperature at peak time (°C)	37		37			
HOURLY AVERAGE LOAD IN ATTIKI	3377		3377			

NOTE:

- * Includes only the HV substations
- ** They are included in the HV INDUSTRIAL CUSTOMERS
- *** Value from SCADA SYSTEM



HELLENIC TRANSMISSION
SYSTEM OPERATOR

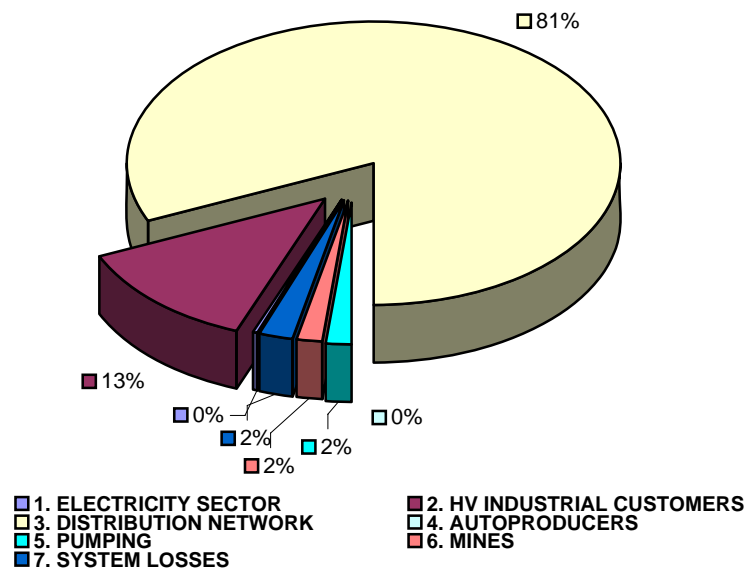
TOTAL ELECTRICITY CONSUMPTION

(MWH)

Month : JUNE 2008

TOTAL ELECTRICITY CONSUMPTION	MONTHLY TOTALS	(%)
CLASSIFICATION	5.062.128	100,00
1. ELECTRICITY SECTOR	12.748	0,25
2. HV INDUSTRIAL CUSTOMERS	639.988	12,64
3. DISTRIBUTION NETWORK	4.126.131	81,51
4. AUTOPRODUCERS	0	0,00
5. PUMPING	91.171	1,80
6. MINES	78.286	1,55
7. SYSTEM LOSSES	113.804	2,25

MONTHLY ELECTRICITY CONSUMPTION





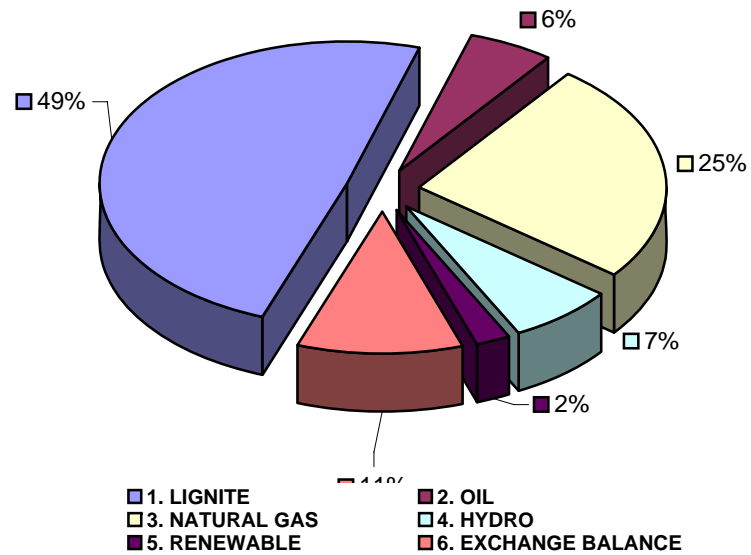
MONTHLY ELECTRICITY PRODUCTION & EXCHANGE BALANCE

(MWH)

Month : JUNE 2008

TOTAL PRODUCTION & INTERCONNECTIONS	MONTH TOTALS	(%)
TOT.PROD. & INTERCON.	5.062.128	100,00
1. LIGNITE	2.482.415	49,04
2. OIL	289.491	5,72
3. NATURAL GAS	1.277.317	25,23
4. HYDRO	352.301	6,96
5. RENEWABLE	113.747	2,25
6. EXCHANGE BALANCE	546.857	10,80

MONTHLY ELECTRICITY PRODUCTION





MONTHLY PEAK LOAD ANALYSIS

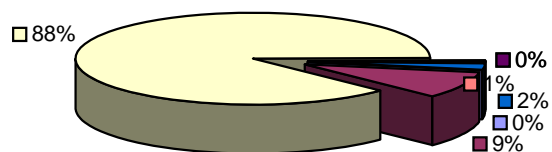
DAY : 20080626

Hourly average peak load			
MW	10050	Hour	15,00

ELECTRICITY CONSUMPTION DURING PEAK LOAD			
	TOTAL	10050	100,00
1. ELECTRICITY SECTOR	13	0,13	
2. HV INDUSTRIAL CUSTOMERS	940	9,35	
3. DISTRIBUTION NETWORK	8781	87,37	
4. AUTOPRODUCERS	0	0,00	
5. PUMPING	0	0,00	
6. MINES	90	0,90	
7. SYSTEM LOSSES	226	2,25	

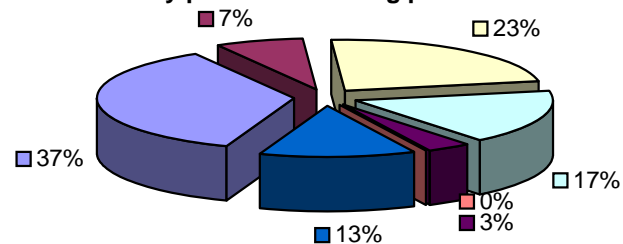
ELECTRICITY PRODUCTION DURING PEAK LOAD			
	TOTAL	10050	100,00
1. LIGNITE	3616	35,98	
2. OIL	733	7,29	
3. NATURAL GAS	2317	23,05	
4. HYDRO	1746	17,37	
5. RENEWABLE	344	3,42	
6. OTHER SOURCES	1	0,01	
7. EXCHANGE BALANCE	1293	12,87	

Electricity consumption during peak load



- 1. ELECTRICITY SECTOR
- 2. HV INDUSTRIAL CUSTOMERS
- 3. DISTRIBUTION NETWORK
- 4. AUTOPRODUCERS
- 5. PUMPING
- 6. MINES
- 7. SYSTEM LOSSES

Electricity production during peak load



- 1. LIGNITE
- 2. OIL
- 3. NATURAL GAS
- 4. HYDRO
- 5. RENEWABLE
- 6. OTHER SOURCES
- 7. EXCHANGE BALANCE