



TRANSMISSION SYSTEM ENERGY BALANCE MONTHLY  
REPORT

Info :A. Grassou +30 210 9466905

	MAY 2008	COMPARED TO LAST YEAR(%)	JANUARY - MAY 2008	COMPARED TO LAST YEAR(%)
<b>PRODUCTION AND EXCHANGE BALANCE (MWh)</b>				
<b>TOTAL PRODUCTION &amp; EXCHANGE BALANCE</b>	<b>4.449.192</b>	<b>1,44</b>	<b>22.437.300</b>	<b>1,42</b>
<b>TOTAL NET PRODUCTION</b>	<b>3.993.194</b>	<b>-2,50</b>	<b>20.142.631</b>	<b>-1,86</b>
<b>CLASSIFICATION</b>				
LIGNITE	2.366.914	-1,33	11.352.957	-8,81
OIL	157.817	-40,04	1.283.955	10,35
NATURAL GAS	1.167.809	6,19	5.784.540	10,22
HYDRO	226.780	-12,29	1.120.087	-0,67
*RENEWABLE AND OTHER SOURCES	73.874	-1,72	601.092	12,51
<b>EXCHANGE BALANCE</b>	<b>455.998</b>	<b>56,80</b>	<b>2.294.669</b>	<b>43,46</b>
<b>IMPORTS</b>	<b>567.366</b>		<b>3.163.253</b>	
from TURKEY	0		0	
from ALBANIA	15		30	
from FYROM	77.938		462.848	
from BULGARIA	351.169		1.836.937	
from ITALY	138.244		863.438	
<b>EXPORTS</b>	<b>111.368</b>		<b>868.584</b>	
to TURKEY	0		29.791	
to ALBANIA	95.787		714.904	
to FYROM	4.459		39.549	
to BULGARIA	0		0	
to ITALY	11.122		84.340	

<b>CONSUMPTION (MWh)</b>					
<b>TOTAL CONSUMPTION</b>	<b>4.449.192</b>	<b>1,44</b>	<b>22.437.300</b>	<b>1,42</b>	
<b>NET CONSUMPTION</b>	<b>4.348.699</b>	<b>1,56</b>	<b>21.937.834</b>	<b>1,48</b>	
<b>PUMPING</b>	<b>100.493</b>		<b>499.466</b>		
<b>CLASSIFICATION</b>					
CONSUMPTION OF ELECTRICITY SECTOR	10.579		70.192		
HV INDUSTRIAL CUSTOMERS	688.241	0,79	3.230.851	-2,08	
DISTRIBUTION NETWORK	3.473.442	1,69	17.764.365	2,35	
** AUTOPRODUCERS	0		0		
PUMPING	100.493		499.466		
MINES	78.605	-12,31	386.615	-16,70	
SYSTEM LOSSES	97.832		485.811		
<b>SYSTEM POWER (MW)</b>					
SYSTEM INSTANT PEAK LOAD	<b>7.797</b>	<b>***</b>	<b>8.825</b>	<b>***</b>	
date / time of peak load	29/05/08	13:00	04/01/08	19:00	
Athens (ROUF) temperature at peak time (°C)	23		7		
HOURLY AVERAGE LOAD IN ATTIKI	2516		3270		

**NOTE:**

- \* Includes only the HV substations
- \*\* They are included in the HV INDUSTRIAL CUSTOMERS
- \*\*\* Value from SCADA SYSTEM



HELLENIC TRANSMISSION  
SYSTEM OPERATOR

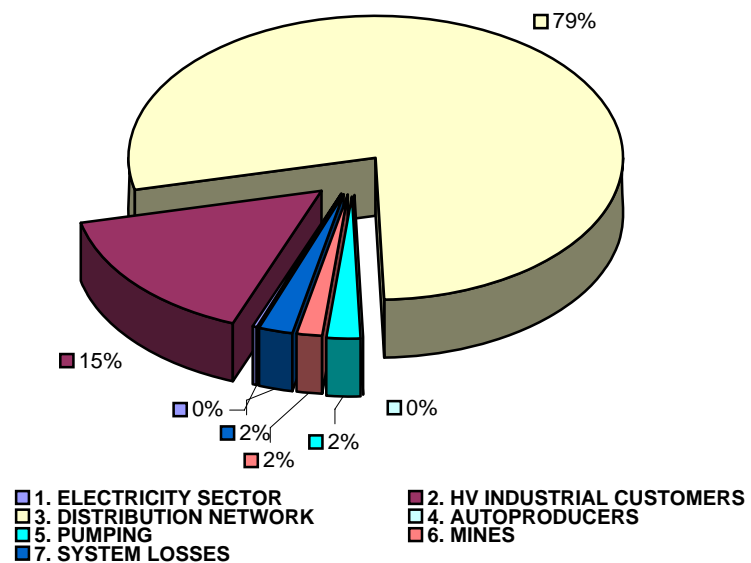
### TOTAL ELECTRICITY CONSUMPTION

(MWH)

Month : MAY 2008

TOTAL ELECTRICITY CONSUMPTION	MONTHLY TOTALS	(%)
<b>CLASSIFICATION</b>	<b>4.449.192</b>	<b>100,00</b>
<b>1. ELECTRICITY SECTOR</b>	<b>10.579</b>	<b>0,24</b>
<b>2. HV INDUSTRIAL CUSTOMERS</b>	<b>688.241</b>	<b>15,47</b>
<b>3. DISTRIBUTION NETWORK</b>	<b>3.473.442</b>	<b>78,07</b>
<b>4. AUTOPRODUCERS</b>	<b>0</b>	<b>0,00</b>
<b>5. PUMPING</b>	<b>100.493</b>	<b>2,26</b>
<b>6. MINES</b>	<b>78.605</b>	<b>1,77</b>
<b>7. SYSTEM LOSSES</b>	<b>97.832</b>	<b>2,20</b>

### MONTHLY ELECTRICITY CONSUMPTION





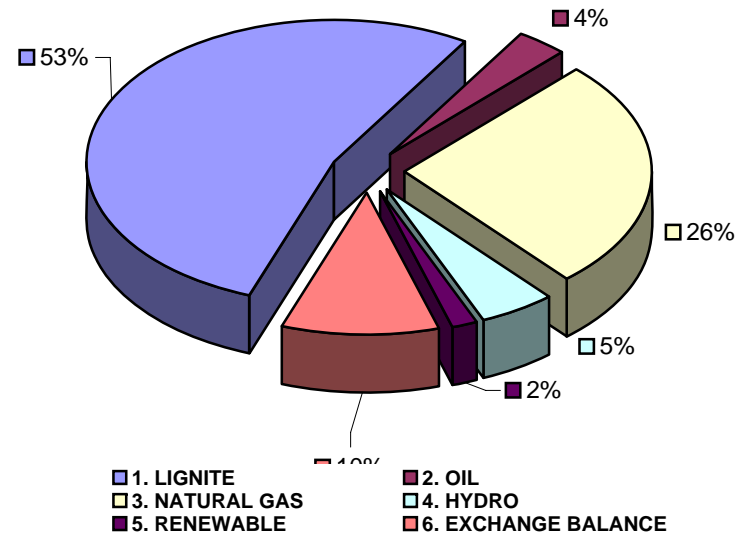
MONTHLY ELECTRICITY PRODUCTION & EXCHANGE BALANCE

(MWH)

Month : MAY 2008

TOTAL PRODUCTION & INTERCONNECTIONS	MONTH TOTALS	(%)
<b>TOT.PROD. &amp; INTERCON.</b>	<b>4.449.192</b>	<b>100,00</b>
1. LIGNITE	2.366.914	53,20
2. OIL	157.817	3,55
3. NATURAL GAS	1.167.809	26,25
4. HYDRO	226.780	5,10
5. RENEWABLE	73.874	1,66
6. EXCHANGE BALANCE	455.998	10,25

MONTHLY ELECTRICITY PRODUCTION





MONTHLY PEAK LOAD ANALYSIS

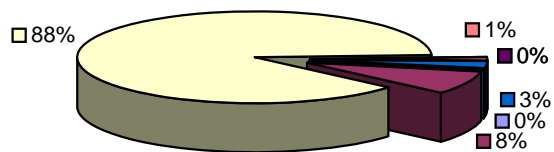
DAY : 20080529

Hourly average peak load			
MW	8498	Hour	13,00

ELECTRICITY CONSUMPTION DURING PEAK LOAD		
TOTAL	8498	100,00
1. ELECTRICITY SECTOR	16	0,19
2. HV INDUSTRIAL CUSTOMERS	720	8,47
3. DISTRIBUTION NETWORK	7458	87,76
4. AUTOPRODUCERS	0	0,00
5. PUMPING	0	0,00
6. MINES	85	1,00
7. SYSTEM LOSSES	219	2,58

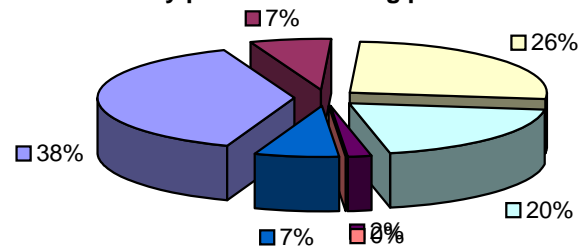
ELECTRICITY PRODUCTION DURING PEAK LOAD		
TOTAL	8498	100,00
1. LIGNITE	3283	38,63
2. OIL	560	6,59
3. NATURAL GAS	2232	26,27
4. HYDRO	1671	19,66
5. RENEWABLE	163	1,92
6. OTHER SOURCES	1	0,01
7. EXCHANGE BALANCE	588	6,92

Electricity consumption during peak load



- 1. ELECTRICITY SECTOR
- 2. HV INDUSTRIAL CUSTOMERS
- 3. DISTRIBUTION NETWORK
- 4. AUTOPRODUCERS
- 5. PUMPING
- 6. MINES
- 7. SYSTEM LOSSES

Electricity production during peak load



- 1. LIGNITE
- 2. OIL
- 3. NATURAL GAS
- 4. HYDRO
- 5. RENEWABLE
- 6. OTHER SOURCES
- 7. EXCHANGE BALANCE