



TRANSMISSION SYSTEM ENERGY BALANCE MONTHLY
REPORT

Info :A. Grassou +30 210 9466905

	APRIL 2008	COMPARED TO LAST YEAR(%)	JANUARY - APRIL 2008	COMPARED TO LAST YEAR(%)
PRODUCTION AND EXCHANGE BALANCE (MWh)				
TOTAL PRODUCTION & EXCHANGE BALANCE	4.128.809	1,44	17.988.108	1,41
TOTAL NET PRODUCTION	3.693.191	-0,42	16.149.437	-1,70
CLASSIFICATION				
LIGNITE	2.261.139	-5,70	8.986.043	-10,61
OIL	221.932	11,71	1.126.138	25,10
NATURAL GAS	944.259	10,76	4.616.731	11,29
HYDRO	133.564	-25,19	893.307	2,81
*RENEWABLE AND OTHER SOURCES	132.297	63,01	527.218	14,77
EXCHANGE BALANCE	435.618	20,44	1.838.671	40,46
IMPORTS	596.814		2.595.887	
from TURKEY	0		0	
from ALBANIA	0		15	
from FYROM	102.677		384.910	
from BULGARIA	395.412		1.485.768	
from ITALY	98.725		725.194	
EXPORTS	161.196		757.216	
to TURKEY	0		29.791	
to ALBANIA	103.298		619.117	
to FYROM	3.185		35.090	
to BULGARIA	0		0	
to ITALY	54.713		73.218	

CONSUMPTION (MWh)					
TOTAL CONSUMPTION****	4.128.809	1,44	17.988.108	1,41	
NET CONSUMPTION****	4.029.243	1,46	17.589.135	1,45	
PUMPING	99.566		398.973		
CLASSIFICATION					
CONSUMPTION OF ELECTRICITY SECTOR	14.250		59.613		
HV INDUSTRIAL CUSTOMERS	627.189	-1,41	2.542.610	-2,83	
DISTRIBUTION NETWORK	3.212.993	1,76	14.290.923	2,50	
** AUTOPRODUCERS	0		0		
PUMPING	99.566		398.973		
MINES	82.342	-4,29	308.010	-17,76	
SYSTEM LOSSES	92.469		387.979		
SYSTEM POWER (MW)					
SYSTEM INSTANT PEAK LOAD	7.866 ***		8.825 ***		
date / time of peak load	03/04/08 21:00		04/01/08 19:00		
Athens (ROUF) temperature at peak time (°C)	10		7		
HOURLY AVERAGE LOAD IN ATTIKI	2822		3270		

NOTE:

- * Includes only the HV substations
- ** They are included in the HV INDUSTRIAL CUSTOMERS
- *** Value from SCADA SYSTEM



HELLENIC TRANSMISSION
SYSTEM OPERATOR

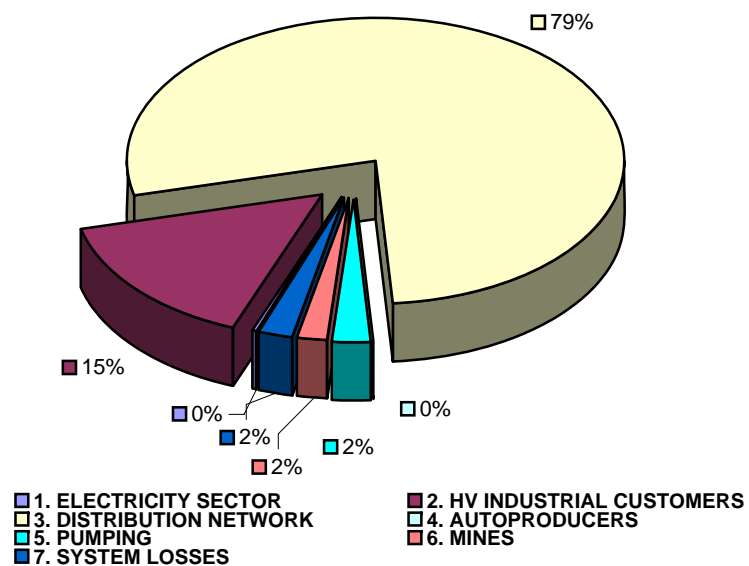
TOTAL ELECTRICITY CONSUMPTION

(MWH)

Month : APRIL 2008

TOTAL ELECTRICITY CONSUMPTION	MONTHLY TOTALS	(%)
CLASSIFICATION	4.128.809	100,00
1. ELECTRICITY SECTOR	14.250	0,35
2. HV INDUSTRIAL CUSTOMERS	627.189	15,19
3. DISTRIBUTION NETWORK	3.212.993	77,82
4. AUTOPRODUCERS	0	0,00
5. PUMPING	99.566	2,41
6. MINES	82.342	1,99
7. SYSTEM LOSSES	92.469	2,24

MONTHLY ELECTRICITY CONSUMPTION





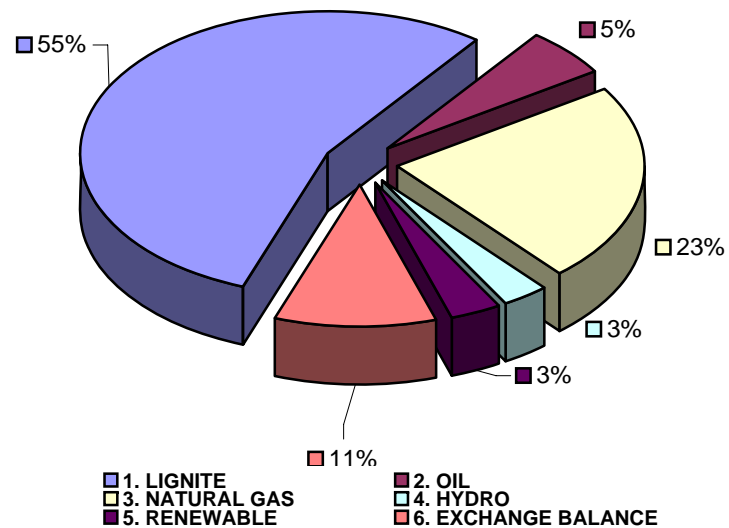
MONTHLY ELECTRICITY PRODUCTION & EXCHANGE BALANCE

(MWH)

Month : APRIL 2008

TOTAL PRODUCTION & EXCHANGE BALANCE	MONTH TOTALS	(%)
TOT.PROD. & INTERCON.	4.128.809	100,00
1. LIGNITE	2.261.139	54,76
2. OIL	221.932	5,38
3. NATURAL GAS	944.259	22,87
4. HYDRO	133.564	3,23
5. RENEWABLE	132.297	3,20
6. EXCHANGE BALANCE	435.618	10,55

MONTHLY ELECTRICITY PRODUCTION





MONTHLY PEAK LOAD ANALYSIS

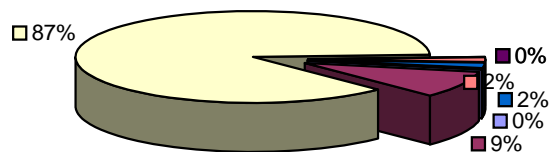
DAY : 20080403

Hourly average peak load			
MW	7674	Hour	21,00

ELECTRICITY CONSUMPTION DURING PEAK LOAD		
TOTAL	7674	100,00
1. ELECTRICITY SECTOR	16	0,21
2. HV INDUSTRIAL CUSTOMERS	728	9,49
3. DISTRIBUTION NETWORK	6661	86,80
4. AUTOPRODUCERS	0	0,00
5. PUMPING	0	0,00
6. MINES	117	1,52
7. SYSTEM LOSSES	152	1,98

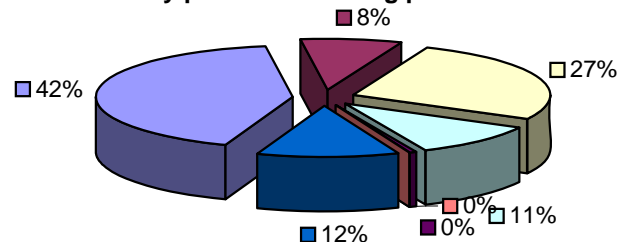
ELECTRICITY PRODUCTION DURING PEAK LOAD		
TOTAL	7674	100,00
1. LIGNITE	3241	42,23
2. OIL	633	8,25
3. NATURAL GAS	2045	26,65
4. HYDRO	819	10,67
5. RENEWABLE	37	0,48
6. OTHER SOURCES	1	0,01
7. EXCHANGE BALANCE	898	11,70

Electricity consumption during peak load



- 1. ELECTRICITY SECTOR
- 2. HV INDUSTRIAL CUSTOMERS
- 3. DISTRIBUTION NETWORK
- 4. AUTOPRODUCERS
- 5. PUMPING
- 6. MINES
- 7. SYSTEM LOSSES

Electricity production during peak load



- 1. LIGNITE
- 2. OIL
- 3. NATURAL GAS
- 4. HYDRO
- 5. RENEWABLE
- 6. OTHER SOURCES
- 7. EXCHANGE BALANCE