



HELLENIC TRANSMISSION  
SYSTEM OPERATOR

TRANSMISSION SYSTEM ENERGY BALANCE MONTHLY  
REPORT

Info :A. Grassou +30 210 9466905

	MARCH 2008	COMPARED TO LAST YEAR(%)	JANUARY - MARCH 2008	COMPARED TO LAST YEAR(%)
<b>PRODUCTION AND EXCHANGE BALANCE (MWh)</b>				
<b>TOTAL PRODUCTION &amp; EXCHANGE BALANCE</b>	<b>4.309.063</b>	<b>-4,95</b>	<b>13.859.299</b>	<b>1,38</b>
<b>TOTAL NET PRODUCTION</b>	<b>3.636.857</b>	<b>-10,17</b>	<b>12.456.246</b>	<b>-2,11</b>
<b>CLASSIFICATION</b>				
LIGNITE	1.718.716	-31,56	6.724.904	-12,16
OIL	237.284	25,25	904.206	28,85
NATURAL GAS	1.297.477	24,49	3.672.472	11,37
HYDRO	217.484	29,90	759.743	9,99
*RENEWABLE AND OTHER SOURCES	165.896	19,88	394.921	4,32
<b>EXCHANGE BALANCE</b>	<b>672.206</b>	<b>38,66</b>	<b>1.403.053</b>	<b>48,17</b>
<b>IMPORTS</b>	<b>853.331</b>		<b>1.999.073</b>	
from TURKEY	0		0	
from ALBANIA	1		15	
from FYROM	142.822		282.233	
from BULGARIA	428.025		1.090.356	
from ITALY	282.483		626.469	
<b>EXPORTS</b>	<b>181.125</b>		<b>596.020</b>	
to TURKEY	0		29.791	
to ALBANIA	169.526		515.819	
to FYROM	7.068		31.905	
to BULGARIA	0		0	
to ITALY	4.531		18.505	

CONSUMPTION (MWh)				
TOTAL CONSUMPTION****	4.309.063	-4,95	13.859.299	1,38
NET CONSUMPTION****	4.208.248	-4,83	13.559.892	1,42
PUMPING	100.815		299.407	
<b>CLASSIFICATION</b>				
CONSUMPTION OF ELECTRICITY SECTOR	24.572		45.363	
HV INDUSTRIAL CUSTOMERS	655.309	-5,33	1.915.421	-3,30
DISTRIBUTION NETWORK	3.382.487	-4,02	11.077.930	2,68
** AUTOPRODUCERS	0		0	
PUMPING	100.815		299.407	
MINES	52.538	-44,97	225.668	-21,80
SYSTEM LOSSES	93.342		295.510	

SYSTEM POWER (MW)				
SYSTEM INSTANT PEAK LOAD	7.842	***	8.825	***
date / time of peak load	28/03/08	20:00	04/01/08	19:00
Athens (ROUF) temperature at peak time (°C)	8		7	
HOURLY AVERAGE LOAD IN ATTIKI	2792		3270	

**NOTE:**

- \* Includes only the HV substations
- \*\* They are included in the HV INDUSTRIAL CUSTOMERS
- \*\*\* Value from SCADA SYSTEM
- \*\*\*\*The observed decrease in consumption stems from load shedding due to limited production availability resulting from a strike



HELLENIC TRANSMISSION  
SYSTEM OPERATOR

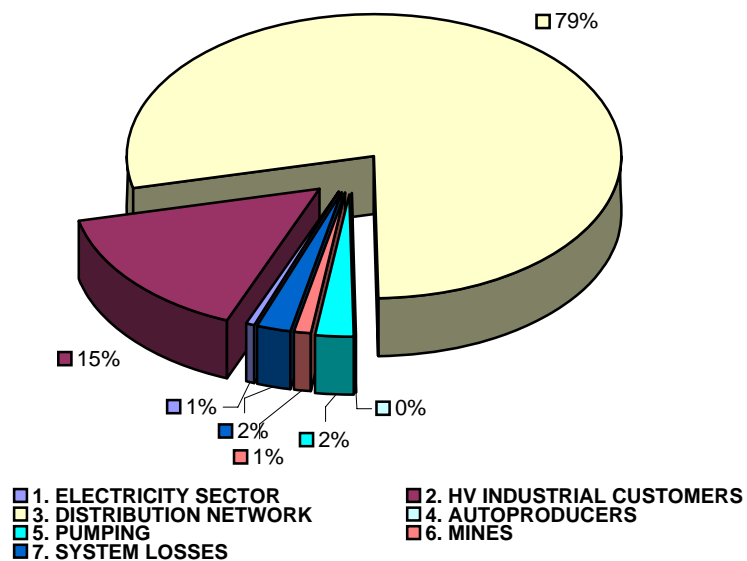
**TOTAL ELECTRICITY CONSUMPTION**

(MWH)

Month : MARCH 2008

TOTAL ELECTRICITY CONSUMPTION	MONTHLY TOTALS	(%)
<b>CLASSIFICATION</b>	<b>4.309.063</b>	<b>100,00</b>
<b>1. ELECTRICITY SECTOR</b>	<b>24.572</b>	<b>0,57</b>
<b>2. HV INDUSTRIAL CUSTOMERS</b>	<b>655.309</b>	<b>15,21</b>
<b>3. DISTRIBUTION NETWORK</b>	<b>3.382.487</b>	<b>78,50</b>
<b>4. AUTOPRODUCERS</b>	<b>0</b>	<b>0,00</b>
<b>5. PUMPING</b>	<b>100.815</b>	<b>2,34</b>
<b>6. MINES</b>	<b>52.538</b>	<b>1,22</b>
<b>7. SYSTEM LOSSES</b>	<b>93.342</b>	<b>2,17</b>

**MONTHLY ELECTRICITY CONSUMPTION**

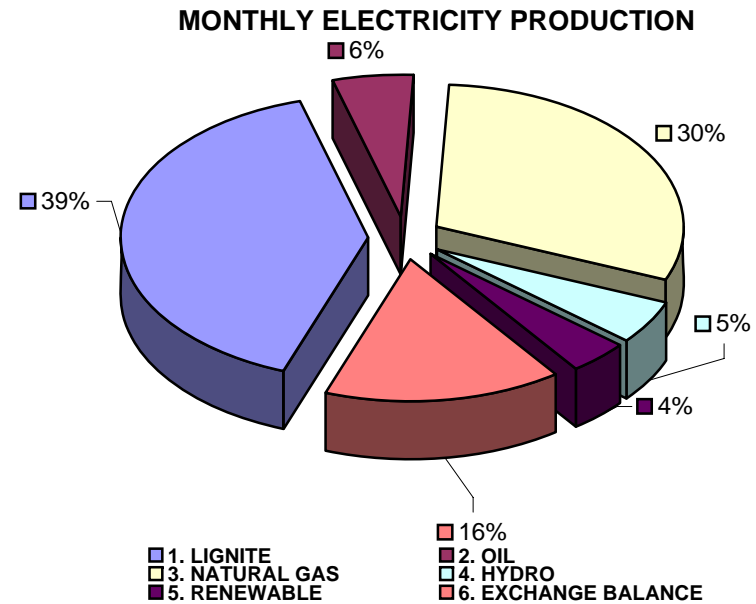




MONTHLY ELECTRICITY PRODUCTION & EXCHANGE BALANCE  
(MWH)

Month : MARCH 2008

TOTAL PRODUCTION & INTERCONNECTIONS	MONTH TOTALS	(%)
<b>TOT.PROD. &amp; INTERCON.</b>	<b>4.309.063</b>	<b>100,00</b>
1. LIGNITE	1.718.716	39,89
2. OIL	237.284	5,51
3. NATURAL GAS	1.297.477	30,11
4. HYDRO	217.484	5,05
5. RENEWABLE	165.896	3,85
6. EXCHANGE BALANCE	672.206	15,60





MONTHLY PEAK LOAD ANALYSIS

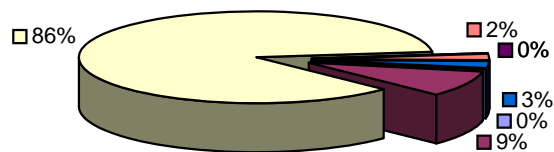
DAY : 20080328

Hourly average peak load			
MW	7703	Hour	20,00

ELECTRICITY CONSUMPTION DURING PEAK LOAD		
TOTAL	7703	100,00
1. ELECTRICITY SECTOR	21	0,27
2. HV INDUSTRIAL CUSTOMERS	716	9,30
3. DISTRIBUTION NETWORK	6612	85,84
4. AUTOPRODUCERS	0	0,00
5. PUMPING	0	0,00
6. MINES	154	2,00
7. SYSTEM LOSSES	200	2,60

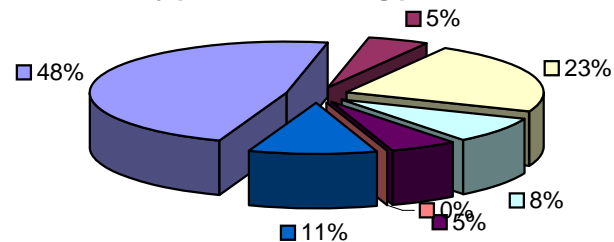
ELECTRICITY PRODUCTION DURING PEAK LOAD		
TOTAL	7703	100,00
1. LIGNITE	3680	47,77
2. OIL	396	5,14
3. NATURAL GAS	1751	22,73
4. HYDRO	637	8,27
5. RENEWABLE	418	5,43
6. OTHER SOURCES	1	0,01
7. EXCHANGE BALANCE	820	10,65

Electricity consumption during peak load



- 1. ELECTRICITY SECTOR
- 2. HV INDUSTRIAL CUSTOMERS
- 3. DISTRIBUTION NETWORK
- 4. AUTOPRODUCERS
- 5. PUMPING
- 6. MINES
- 7. SYSTEM LOSSES

Electricity production during peak load



- 1. LIGNITE
- 2. OIL
- 3. NATURAL GAS
- 4. HYDRO
- 5. RENEWABLE
- 6. OTHER SOURCES
- 7. EXCHANGE BALANCE