



TRANSMISSION SYSTEM ENERGY BALANCE MONTHLY
REPORT

Info :A. Grassou +30 210 9466905

	JANUARY 2008	COMPARED TO LAST YEAR(%)	JANUARY - JANUARY 2008	COMPARED TO LAST YEAR(%)
PRODUCTION AND EXCHANGE BALANCE (MWh)				
TOTAL PRODUCTION & EXCHANGE BALANCE	4.963.471	5,88	4.963.471	5,88
TOTAL NET PRODUCTION	4.703.991	3,95	4.703.991	3,95
CLASSIFICATION				
LIGNITE	2.759.967	4,91	2.759.967	4,91
OIL	343.856	28,73	343.856	28,73
NATURAL GAS	1.203.286	-0,24	1.203.286	-0,24
HYDRO	279.043	-6,24	279.043	-6,24
*RENEWABLE AND OTHER SOURCES	117.839	-4,72	117.839	-4,72
EXCHANGE BALANCE	259.480	59,73	259.480	59,73
IMPORTS	485.004		485.004	
from TURKEY	0		0	
from ALBANIA	14		14	
from FYROM	54.982		54.982	
from BULGARIA	322.216		322.216	
from ITALY	107.792		107.792	
EXPORTS	225.524		225.524	
to TURKEY	9.260		9.260	
to ALBANIA	190.602		190.602	
to FYROM	17.533		17.533	
to BULGARIA	0		0	
to ITALY	8.129		8.129	

CONSUMPTION (MWh)					
TOTAL CONSUMPTION	4.963.471	5,88	4.963.471	5,88	
NET CONSUMPTION	4.860.828	5,77	4.860.828	5,77	
PUMPING	102.643		102.643		
CLASSIFICATION					
CONSUMPTION OF ELECTRICITY SECTOR	9.338		9.338		
HV INDUSTRIAL CUSTOMERS	659.684	-0,05	659.684	-0,05	
DISTRIBUTION NETWORK	3.999.072	6,92	3.999.072	6,92	
** AUTOPRODUCERS	0		0		
PUMPING	102.643		102.643		
MINES	91.048	-4,91	91.048	-4,91	
SYSTEM LOSSES	101.686		101.686		
SYSTEM POWER (MW)					
SYSTEM INSTANT PEAK LOAD	8.825	***	8.825	***	
date / time of peak load	04/01/08	19:00	04/01/08	19:00	
Athens (ROUF) temperature at peak time (°C)	7		7		
HOURLY AVERAGE LOAD IN ATTIKI	3270		3270		

NOTE:

- * Includes only the HV substations
- ** They are included in the HV INDUSTRIAL CUSTOMERS
- *** Value from SCADA SYSTEM



HELLENIC TRANSMISSION
SYSTEM OPERATOR

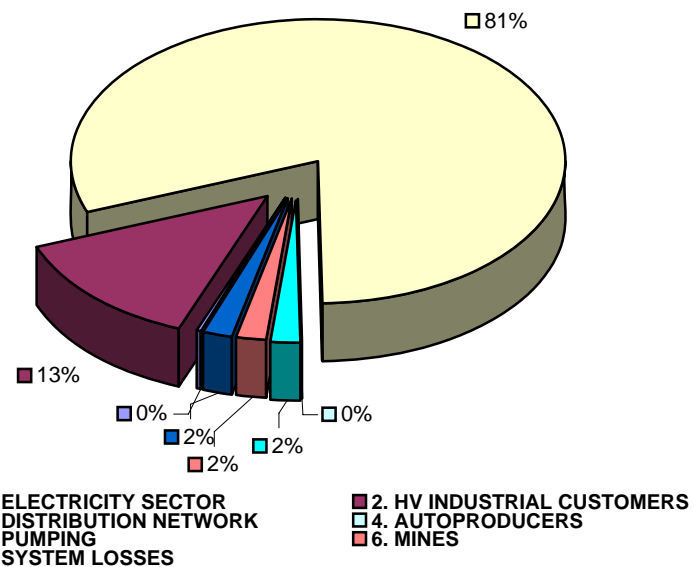
TOTAL ELECTRICITY CONSUMPTION

(MWH)

Month : JANUARY 2008

TOTAL ELECTRICITY CONSUMPTION	MONTHLY TOTALS	(%)
CLASSIFICATION	4.963.471	100,00
1. ELECTRICITY SECTOR	9.338	0,19
2. HV INDUSTRIAL CUSTOMERS	659.684	13,29
3. DISTRIBUTION NETWORK	3.999.072	80,57
4. AUTOPRODUCERS	0	0,00
5. PUMPING	102.643	2,07
6. MINES	91.048	1,83
7. SYSTEM LOSSES	101.686	2,05

MONTHLY ELECTRICITY CONSUMPTION



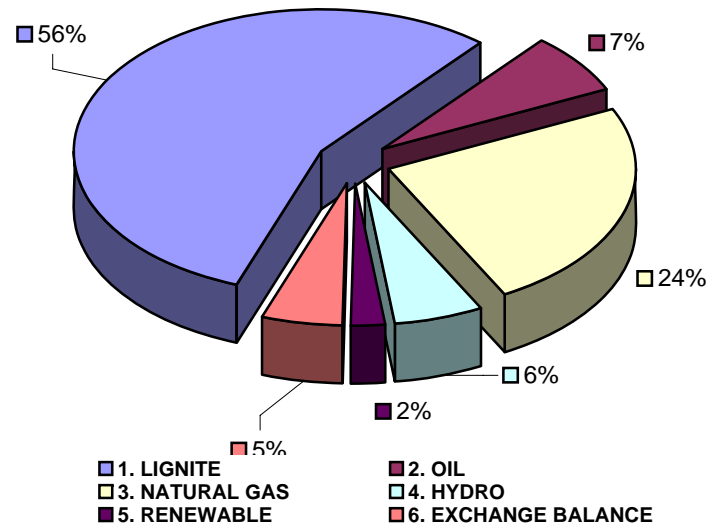


MONTHLY ELECTRICITY PRODUCTION & EXCHANGE BALANCE
(MWH)

Month : JANUARY 2008

TOTAL PRODUCTION & INTERCONNECTIONS	MONTH TOTALS	(%)
TOT.PROD. & INTERCON.	4.963.471	100,00
1. LIGNITE	2.759.967	55,61
2. OIL	343.856	6,93
3. NATURAL GAS	1.203.286	24,24
4. HYDRO	279.043	5,62
5. RENEWABLE	117.839	2,37
6. EXCHANGE BALANCE	259.480	5,23

MONTHLY ELECTRICITY PRODUCTION





MONTHLY PEAK LOAD ANALYSIS

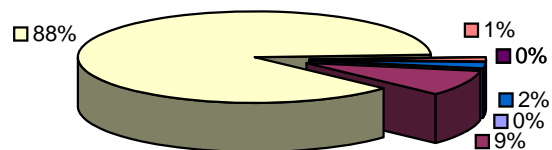
DAY : : 20080104

Hourly average peak load			
MW	8785	Hour	19,00

ELECTRICITY CONSUMPTION DURING PEAK LOAD		
	ΣΥΝΟΛΟ	
1. ELECTRICITY SECTOR	1	0,01
2. HV INDUSTRIAL CUSTOMERS	807	9,19
3. DISTRIBUTION NETWORK	7657	87,16
4. AUTOPRODUCERS	0	0,00
5. PUMPING	0	0,00
6. MINES	115	1,31
7. SYSTEM LOSSES	205	2,33

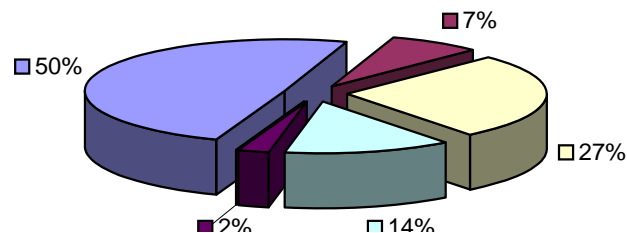
ELECTRICITY PRODUCTION DURING PEAK LOAD		
	ΣΥΝΟΛΟ	
1. LIGNITE	4230	48,15
2. OIL	632	7,19
3. NATURAL GAS	2300	26,18
4. HYDRO	1174	13,36
5. RENEWABLE	203	2,31
6. OTHER SOURCES	1	0,01
7. EXCHANGE BALANCE	245	2,79

Electricity consumption during peak load



- 1. ELECTRICITY SECTOR
- 2. HV INDUSTRIAL CUSTOMERS
- 3. DISTRIBUTION NETWORK
- 4. AUTOPRODUCERS
- 5. PUMPING
- 6. MINES
- 7. SYSTEM LOSSES

Electricity production during peak load



- 1. LIGNITE
- 2. OIL
- 3. NATURAL GAS
- 4. HYDRO
- 5. RENEWABLE
- 6. OTHER SOURCES