



HELLENIC TRANSMISSION
SYSTEM OPERATOR

TRANSMISSION SYSTEM ENERGY BALANCE MONTHLY
REPORT

Info :A. Grassou +30 210 9466905

	FEBRUARY 2011	COMPARED TO LAST YEAR(%)	JANUARY - FEBRUARY 2011	COMPARED TO LAST YEAR (%)
PRODUCTION AND EXCHANGE BALANCE (MWh)				
TOTAL PRODUCTION & EXCHANGE BALANCE	4.092.015	2,40	8.603.839	0,63
TOTAL NET PRODUCTION	3.762.929	2,91	8.045.028	0,33
CLASSIFICATION				
LIGNITE	2.327.750	23,78	4.925.047	9,16
OIL	95	-99,70	211	-99,69
NATURAL GAS	961.012	39,89	2.046.291	44,22
HYDRO	277.248	-67,77	730.902	-54,20
*RENEWABLE AND OTHER SOURCES	196.824	-0,06	342.577	-19,34
EXCHANGE BALANCE	329.086	-3,10	558.811	5,08
IMPORTS	647.960		1.229.030	
****from TURKEY	221.653		411.564	
from ALBANIA	13		3.225	
from FYROM	172.674		325.308	
from BULGARIA	250.288		480.595	
from ITALY	3.332		8.338	
EXPORTS	318.874		670.219	
****to TURKEY	0		2	
to ALBANIA	150.112		212.734	
to FYROM	183		416	
to BULGARIA	0		0	
to ITALY	168.579		457.067	

CONSUMPTION (MWh)					
TOTAL CONSUMPTION	4.092.015	2,40	8.603.839	0,63	
NET CONSUMPTION	4.049.435	1,40	8.526.166	-0,15	
PUMPING	42.580		77.673		
CLASSIFICATION					
CONSUMPTION OF ELECTRICITY SECTOR	10.883		22.198		
HV INDUSTRIAL CUSTOMERS	527.048	13,04	1.104.283	12,92	
DISTRIBUTION NETWORK	3.326.433	-0,15	7.015.720	-1,58	
** AUTOPRODUCERS	0		0		
PUMPING	42.580		77.673		
MINES	80.156	12,22	161.765	-0,62	
SYSTEM LOSSES	104.915		222.200		
SYSTEM POWER (MW)					
SYSTEM INSTANT PEAK LOAD	8.242	***	8.242	***	
date / time of peak load	03/02/11	20:00	03/02/11	20:00	
Athens (ROUF) temperature at peak time (°C)	9		9		
HOURLY AVERAGE LOAD IN ATTIKI	3194		3194		

NOTE:

* Includes only the HV substations

** They are included in the HV INDUSTRIAL CUSTOMERS

*** Value from SCADA SYSTEM

****The imports/exports on Greece - Turkey interconnection concern physical flows through this tie-line that do not correspond to this neighbouring country. The Turkish System started a parallel operation to the European System on 18.9.2010 and the interconnection is currently running a testing period. During this period no imports/exports take place.



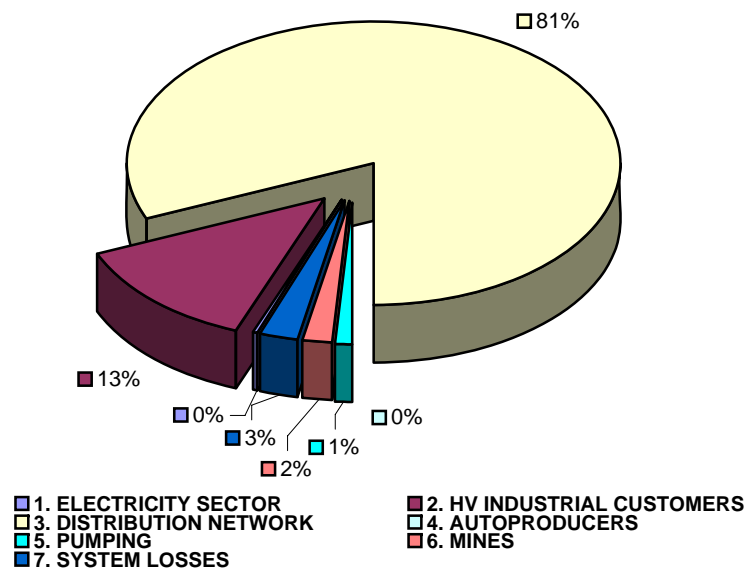
TOTAL ELECTRICITY CONSUMPTION

(MWH)

Month : FEBRUARY 2011

TOTAL ELECTRICITY CONSUMPTION	MONTHLY TOTALS	(%)
CLASSIFICATION	4.092.015	100,00
1. ELECTRICITY SECTOR	10.883	0,27
2. HV INDUSTRIAL CUSTOMERS	527.048	12,88
3. DISTRIBUTION NETWORK	3.326.433	81,29
4. AUTOPRODUCERS	0	0,00
5. PUMPING	42.580	1,04
6. MINES	80.156	1,96
7. SYSTEM LOSSES	104.915	2,56

MONTHLY ELECTRICITY CONSUMPTION



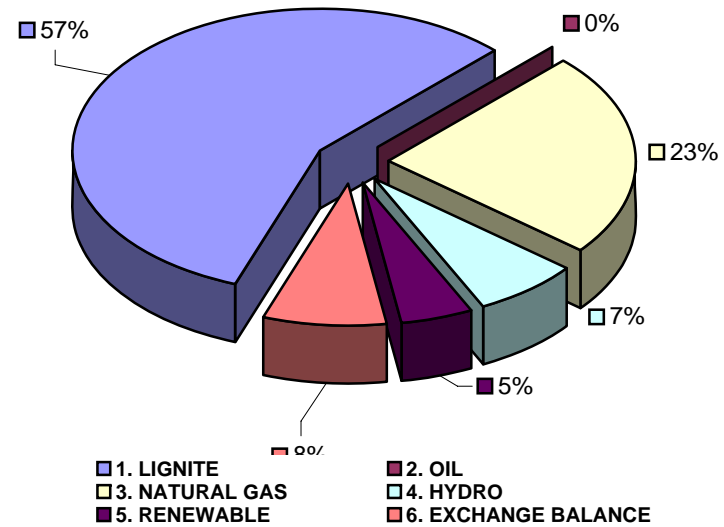


MONTHLY ELECTRICITY PRODUCTION & EXCHANGE BALANCE
(MWH)

Month : FEBRUARY 2011

TOTAL PRODUCTION & INTERCONNECTIONS	MONTH TOTALS	(%)
TOT.PROD. & INTERCON.	4.092.015	100,00
1. LIGNITE	2.327.750	56,89
2. OIL	95	0,00
3. NATURAL GAS	961.012	23,49
4. HYDRO	277.248	6,78
5. RENEWABLE	196.824	4,81
6. EXCHANGE BALANCE	329.086	8,04

MONTHLY ELECTRICITY PRODUCTION





MONTHLY PEAK LOAD ANALYSIS

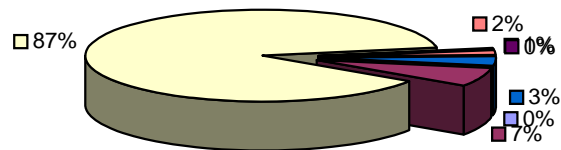
DAY : 20110203

Hourly average peak load			
MW	8153	Hour	20,00

ELECTRICITY CONSUMPTION DURING PEAK LOAD		
	TOTAL	
1. ELECTRICITY SECTOR	11	0,13
2. HV INDUSTRIAL CUSTOMERS	530	6,50
3. DISTRIBUTION NETWORK	7163	87,86
4. AUTOPRODUCERS	45	0,55
5. PUMPING	0	0,00
6. MINES	138	1,69
7. SYSTEM LOSSES	266	3,26
TOTAL	8153	100,00

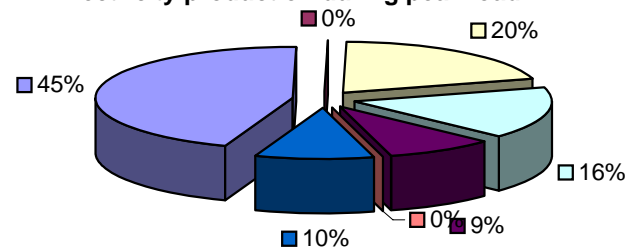
ELECTRICITY PRODUCTION DURING PEAK LOAD		
	TOTAL	
1. LIGNITE	3653	44,81
2. OIL	0	0,00
3. NATURAL GAS	1651	20,25
4. HYDRO	1330	16,31
5. RENEWABLE	718	8,81
6. OTHER SOURCES	1	0,01
7. EXCHANGE BALANCE	800	9,81
TOTAL	8153	100,00

Electricity consumption during peak load



- 1. ELECTRICITY SECTOR
- 2. HV INDUSTRIAL CUSTOMERS
- 3. DISTRIBUTION NETWORK
- 4. AUTOPRODUCERS
- 5. PUMPING
- 6. MINES
- 7. SYSTEM LOSSES

Electricity production during peak load



- 1. LIGNITE
- 2. OIL
- 3. NATURAL GAS
- 4. HYDRO
- 5. RENEWABLE
- 6. OTHER SOURCES
- 7. EXCHANGE BALANCE