



TRANSMISSION SYSTEM ENERGY BALANCE MONTHLY
REPORT

Info :A. Grassou +30 210 9466905

	SEPTEMBER 2010	COMPARED TO LAST YEAR(%)	JANUARY - SEPTEMBER 2010	COMPARED TO LAST YEAR (%)
PRODUCTION AND EXCHANGE BALANCE (MWh)				
TOTAL PRODUCTION & EXCHANGE BALANCE	4.176.871	0,46	39.929.706	-0,54
TOTAL NET PRODUCTION	3.682.878	-6,26	35.027.334	-3,47
CLASSIFICATION				
LIGNITE	2.500.534	-4,01	21.260.271	-9,14
OIL	0	-100,00	113.272	-93,25
NATURAL GAS	805.014	-4,20	7.626.203	17,94
HYDRO	230.206	-17,40	4.615.546	36,64
*RENEWABLE AND OTHER SOURCES	147.124	-8,16	1.412.042	3,66
EXCHANGE BALANCE	493.993	115,99	4.902.372	27,00
IMPORTS	770.495		6.737.161	
from TURKEY	108.599		108.599	
from ALBANIA	403		333.393	
from FYROM	307.602		3.467.565	
from BULGARIA	353.227		2.766.988	
from ITALY	664		60.616	
EXPORTS	276.502		1.834.789	
to TURKEY	14		14	
to ALBANIA	111.522		382.040	
to FYROM	17		17	
to BULGARIA	0		15	
to ITALY	164.949		1.452.703	

CONSUMPTION (MWh)					
TOTAL CONSUMPTION	4.176.871	0,46	39.929.706	-0,54	
NET CONSUMPTION	4.170.528	0,86	39.894.885	0,23	
PUMPING	6.343		34.821		
CLASSIFICATION					
CONSUMPTION OF ELECTRICITY SECTOR	13.236		147.226		
HV INDUSTRIAL CUSTOMERS	542.394	17,09	4.716.417	4,96	
DISTRIBUTION NETWORK	3.404.317	-1,87	33.146.021	-0,92	
** AUTOPRODUCERS	0		0		
PUMPING	6.343		34.821		
MINES	81.994	0,84	723.421	-1,35	
SYSTEM LOSSES	128.587		1.161.800		
SYSTEM POWER (MW)					
SYSTEM INSTANT PEAK LOAD	7.739	***	9.902	***	
date / time of peak load	09/09/10	21:00	15/07/10	21:00	
Athens (ROUF) temperature at peak time (°C)	30		42		
HOURLY AVERAGE LOAD IN ATTIKI	2521		3400		

NOTE:

- * Includes only the HV substations
- ** They are included in the HV INDUSTRIAL CUSTOMERS
- *** Value from SCADA SYSTEM



HELLENIC TRANSMISSION
SYSTEM OPERATOR

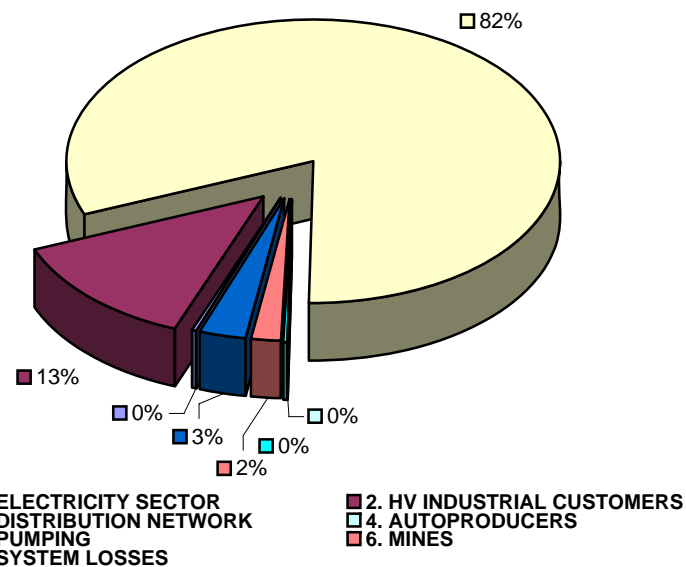
TOTAL ELECTRICITY CONSUMPTION

(MWH)

Month : SEPTEMBER 2010

TOTAL ELECTRICITY CONSUMPTION	MONTHLY TOTALS	(%)
CLASSIFICATION	4.176.871	100,00
1. ELECTRICITY SECTOR	13.236	0,32
2. HV INDUSTRIAL CUSTOMERS	542.394	12,99
3. DISTRIBUTION NETWORK	3.404.317	81,50
4. AUTOPRODUCERS	0	0,00
5. PUMPING	6.343	0,15
6. MINES	81.994	1,96
7. SYSTEM LOSSES	128.587	3,08

MONTHLY ELECTRICITY CONSUMPTION



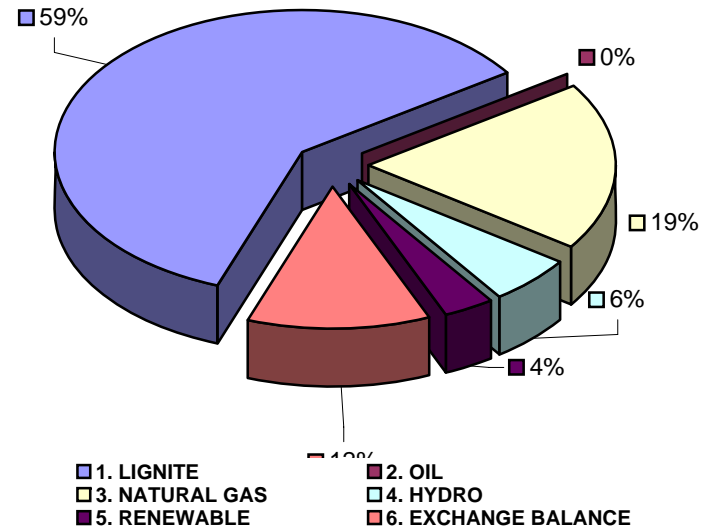


MONTHLY ELECTRICITY PRODUCTION & EXCHANGE BALANCE
(MWH)

Month : SEPTEMBER 2010

TOTAL PRODUCTION & INTERCONNECTIONS	MONTH TOTALS	(%)
TOT.PROD. & INTERCON.	4.176.871	100,00
1. LIGNITE	2.500.534	59,87
2. OIL	0	0,00
3. NATURAL GAS	805.014	19,27
4. HYDRO	230.206	5,51
5. RENEWABLE	147.124	3,52
6. EXCHANGE BALANCE	493.993	11,83

MONTHLY ELECTRICITY PRODUCTION





MONTHLY PEAK LOAD ANALYSIS

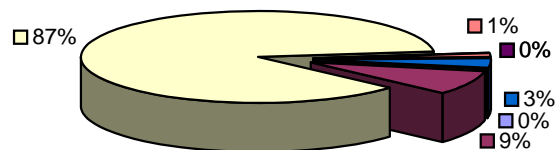
DAY : 20100909

Hourly average peak load			
MW	7588	Hour	21,00

ELECTRICITY CONSUMPTION DURING PEAK LOAD		
TOTAL	7588	100,00
1. ELECTRICITY SECTOR	11	0,14
2. HV INDUSTRIAL CUSTOMERS	666	8,78
3. DISTRIBUTION NETWORK	6560	86,45
4. AUTOPRODUCERS	0	0,00
5. PUMPING	0	0,00
6. MINES	107	1,41
7. SYSTEM LOSSES	244	3,22

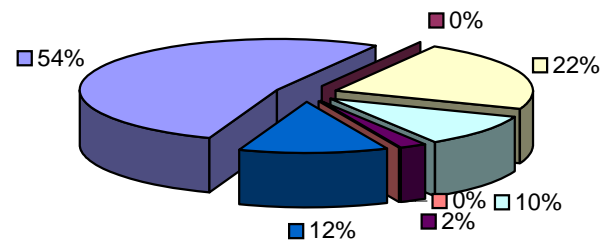
ELECTRICITY PRODUCTION DURING PEAK LOAD		
TOTAL	7588	100,00
1. LIGNITE	4002	52,74
2. OIL	0	0,00
3. NATURAL GAS	1704	22,46
4. HYDRO	788	10,38
5. RENEWABLE	167	2,20
6. OTHER SOURCES	1	0,01
7. EXCHANGE BALANCE	926	12,20

Electricity consumption during peak load



- 1. ELECTRICITY SECTOR
- 2. HV INDUSTRIAL CUSTOMERS
- 3. DISTRIBUTION NETWORK
- 4. AUTOPRODUCERS
- 5. PUMPING
- 6. MINES
- 7. SYSTEM LOSSES

Electricity production during peak load



- 1. LIGNITE
- 2. OIL
- 3. NATURAL GAS
- 4. HYDRO
- 5. RENEWABLE
- 6. OTHER SOURCES
- 7. EXCHANGE BALANCE