



TRANSMISSION SYSTEM ENERGY BALANCE MONTHLY
REPORT

Info :A. Grassou +30 210 9466905

	JULY 2010	COMPARED TO LAST YEAR(%)	JANUARY - JULY 2010	COMPARED TO LAST YEAR (%)
PRODUCTION AND EXCHANGE BALANCE (MWh)				
TOTAL PRODUCTION & EXCHANGE BALANCE	5.269.589	-2,94	30.369.738	-2,71
TOTAL NET PRODUCTION	4.650.335	-0,60	26.604.229	-4,82
CLASSIFICATION				
LIGNITE	2.852.332	-2,23	15.912.444	-11,30
OIL	18.446	-89,74	108.275	-92,96
NATURAL GAS	1.124.047	15,06	5.467.589	15,03
HYDRO	518.321	11,90	3.997.824	47,52
*RENEWABLE AND OTHER SOURCES	137.189	-2,87	1.118.097	10,64
EXCHANGE BALANCE	619.254	-17,54	3.765.509	15,34
IMPORTS	963.768		4.995.889	
from TURKEY	0		0	
from ALBANIA	176		332.962	
from FYROM	502.069		2.679.265	
from BULGARIA	458.167		1.933.429	
from ITALY	3.356		50.233	
EXPORTS	344.514		1.230.380	
to TURKEY	0		0	
to ALBANIA	104.612		156.970	
to FYROM	0		0	
to BULGARIA	0		15	
to ITALY	239.902		1.073.395	

CONSUMPTION (MWh)					
TOTAL CONSUMPTION	5.269.589	-2,94	30.369.738	-2,71	
NET CONSUMPTION	5.269.589	-2,56	30.341.994	-1,85	
PUMPING	0		27.744		
CLASSIFICATION					
CONSUMPTION OF ELECTRICITY SECTOR	13.311		121.844		
HV INDUSTRIAL CUSTOMERS	549.263	-1,36	3.673.075	1,66	
DISTRIBUTION NETWORK	4.459.767	-3,49	25.108.820	-2,89	
** AUTOPRODUCERS	0		0		
PUMPING	0		27.744		
MINES	80.318	-5,03	560.931	-1,07	
SYSTEM LOSSES	166.930		877.324		
SYSTEM POWER (MW)					
SYSTEM INSTANT PEAK LOAD	9.902	***	9.902	***	
date / time of peak load	15/07/10	14:00	15/07/10	14:00	
Athens (ROUF) temperature at peak time (°C)	42		42		
HOURLY AVERAGE LOAD IN ATTIKI	3400		3400		

NOTE:

- * Includes only the HV substations
- ** They are included in the HV INDUSTRIAL CUSTOMERS
- *** Value from SCADA SYSTEM



HELLENIC TRANSMISSION
SYSTEM OPERATOR

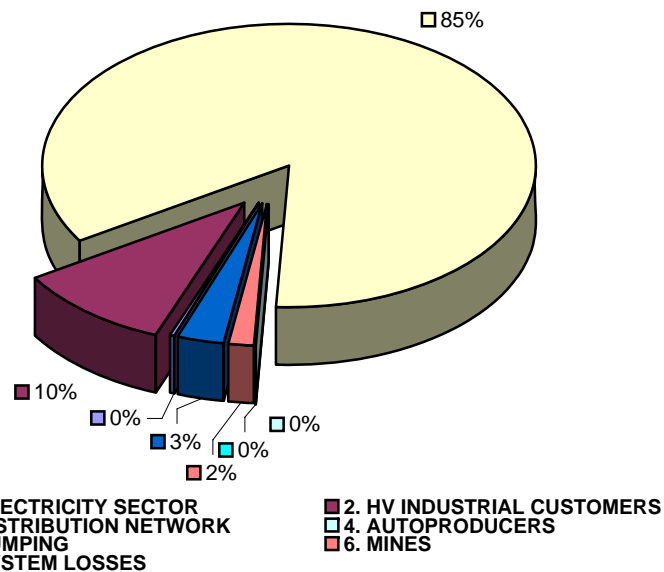
TOTAL ELECTRICITY CONSUMPTION

(MWH)

Month : JULY 2010

TOTAL ELECTRICITY CONSUMPTION	MONTHLY TOTALS	(%)
CLASSIFICATION	5.269.589	100,00
1. ELECTRICITY SECTOR	13.311	0,25
2. HV INDUSTRIAL CUSTOMERS	549.263	10,42
3. DISTRIBUTION NETWORK	4.459.767	84,63
4. AUTOPRODUCERS	0	0,00
5. PUMPING	0	0,00
6. MINES	80.318	1,52
7. SYSTEM LOSSES	166.930	3,17

MONTHLY ELECTRICITY CONSUMPTION





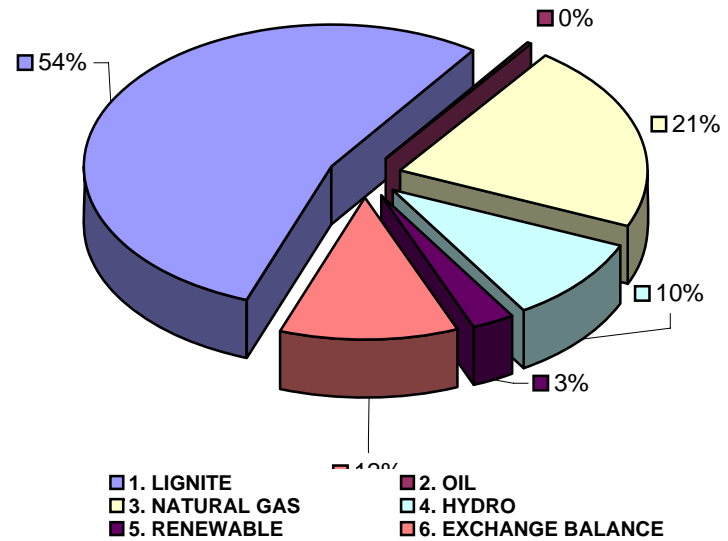
MONTHLY ELECTRICITY PRODUCTION & EXCHANGE BALANCE

(MWH)

Month : JULY 2010

TOTAL PRODUCTION & INTERCONNECTIONS	MONTH TOTALS	(%)
TOT.PROD. & INTERCON.	5.269.589	100,00
1. LIGNITE	2.852.332	54,13
2. OIL	18.446	0,35
3. NATURAL GAS	1.124.047	21,33
4. HYDRO	518.321	9,84
5. RENEWABLE	137.189	2,60
6. EXCHANGE BALANCE	619.254	11,75

MONTHLY ELECTRICITY PRODUCTION





MONTHLY PEAK LOAD ANALYSIS

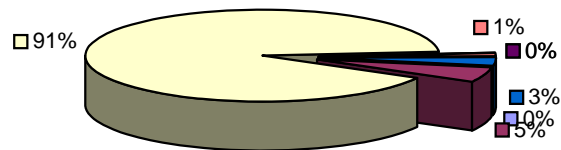
DAY : 20100715

Hourly average peak load			
MW	9794	Hour	14,00

ELECTRICITY CONSUMPTION DURING PEAK LOAD		
	TOTAL	
1. ELECTRICITY SECTOR	7	0,07
2. HV INDUSTRIAL CUSTOMERS	511	5,22
3. DISTRIBUTION NETWORK	8866	90,52
4. AUTOPRODUCERS	0	0,00
5. PUMPING	0	0,00
6. MINES	106	1,08
7. SYSTEM LOSSES	304	3,10

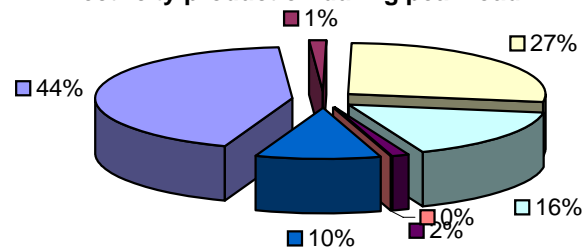
ELECTRICITY PRODUCTION DURING PEAK LOAD		
	TOTAL	
1. LIGNITE	4253	43,42
2. OIL	118	1,20
3. NATURAL GAS	2688	27,45
4. HYDRO	1580	16,13
5. RENEWABLE	158	1,61
6. OTHER SOURCES	1	0,01
7. EXCHANGE BALANCE	996	10,17

Electricity consumption during peak load



- 1. ELECTRICITY SECTOR
- 2. HV INDUSTRIAL CUSTOMERS
- 3. DISTRIBUTION NETWORK
- 4. AUTOPRODUCERS
- 5. PUMPING
- 6. MINES
- 7. SYSTEM LOSSES

Electricity production during peak load



- 1. LIGNITE
- 2. OIL
- 3. NATURAL GAS
- 4. HYDRO
- 5. RENEWABLE
- 6. OTHER SOURCES
- 7. EXCHANGE BALANCE