



TRANSMISSION SYSTEM ENERGY BALANCE MONTHLY
REPORT

Info :A. Grassou +30 210 9466905

	JUNE 2010	COMPARED TO LAST YEAR(%)	JANUARY - JUNE 2010	COMPARED TO LAST YEAR (%)
PRODUCTION AND EXCHANGE BALANCE (MWh)				
TOTAL PRODUCTION & EXCHANGE BALANCE	4.476.490	-3,49	25.100.149	-2,66
TOTAL NET PRODUCTION	3.644.325	-7,42	21.953.894	-5,67
CLASSIFICATION				
LIGNITE	2.446.627	-5,67	13.060.112	-13,06
OIL	14.856	-87,60	89.829	-93,39
NATURAL GAS	767.964	-4,71	4.343.542	15,02
HYDRO	312.356	2,68	3.479.503	54,87
*RENEWABLE AND OTHER SOURCES	102.522	-9,31	980.908	12,83
EXCHANGE BALANCE	832.165	18,59	3.146.255	25,17
IMPORTS	889.169		4.032.121	
from TURKEY	0		0	
from ALBANIA	26.032		332.786	
from FYROM	507.416		2.177.196	
from BULGARIA	344.658		1.475.262	
from ITALY	11.063		46.877	
EXPORTS	57.004		885.866	
to TURKEY	0		0	
to ALBANIA	16.499		52.358	
to FYROM	0		0	
to BULGARIA	0		15	
to ITALY	40.505		833.493	

CONSUMPTION (MWh)					
TOTAL CONSUMPTION	4.476.490	-3,49	25.100.149	-2,66	
NET CONSUMPTION	4.474.042	-2,13	25.072.405	-1,69	
PUMPING	2.448		27.744		
CLASSIFICATION					
CONSUMPTION OF ELECTRICITY SECTOR	17.905		108.533		
HV INDUSTRIAL CUSTOMERS	541.656	2,66	3.123.812	2,21	
DISTRIBUTION NETWORK	3.697.554	-3,41	20.649.053	-2,76	
** AUTOPRODUCERS	0		0		
PUMPING	2.448		27.744		
MINES	78.128	-3,18	480.613	-0,37	
SYSTEM LOSSES	138.799		710.394		
SYSTEM POWER (MW)					
SYSTEM INSTANT PEAK LOAD	9.809	***	9.809	***	
date / time of peak load	16/06/10	14:00	16/06/10	14:00	
Athens (ROUF) temperature at peak time (°C)	40		40		
HOURLY AVERAGE LOAD IN ATTIKI	3561		3561		

NOTE:

- * Includes only the HV substations
- ** They are included in the HV INDUSTRIAL CUSTOMERS
- *** Value from SCADA SYSTEM



HELLENIC TRANSMISSION
SYSTEM OPERATOR

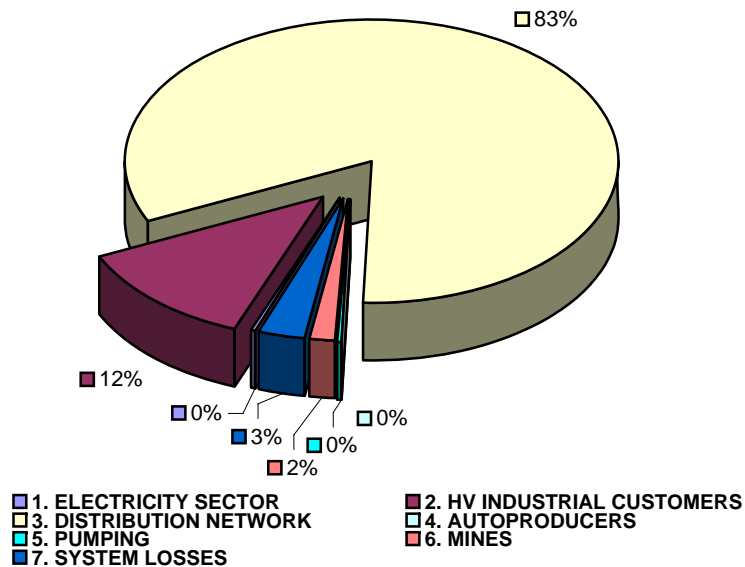
TOTAL ELECTRICITY CONSUMPTION

(MWH)

Month : JUNE 2010

TOTAL ELECTRICITY CONSUMPTION	MONTHLY TOTALS	(%)
CLASSIFICATION	4.476.490	100,00
1. ELECTRICITY SECTOR	17.905	0,40
2. HV INDUSTRIAL CUSTOMERS	541.656	12,10
3. DISTRIBUTION NETWORK	3.697.554	82,60
4. AUTOPRODUCERS	0	0,00
5. PUMPING	2.448	0,05
6. MINES	78.128	1,75
7. SYSTEM LOSSES	138.799	3,10

MONTHLY ELECTRICITY CONSUMPTION





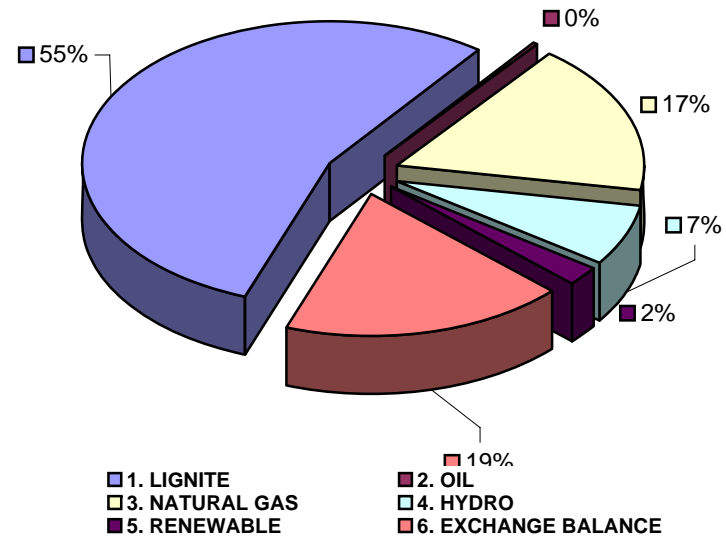
MONTHLY ELECTRICITY PRODUCTION & EXCHANGE BALANCE

(MWH)

Month : JUNE 2010

TOTAL PRODUCTION & INTERCONNECTIONS	MONTH TOTALS	(%)
TOT.PROD. & INTERCON.	4.476.490	100,00
1. LIGNITE	2.446.627	54,66
2. OIL	14.856	0,33
3. NATURAL GAS	767.964	17,16
4. HYDRO	312.356	6,98
5. RENEWABLE	102.522	2,29
6. EXCHANGE BALANCE	832.165	18,59

MONTHLY ELECTRICITY PRODUCTION





MONTHLY PEAK LOAD ANALYSIS

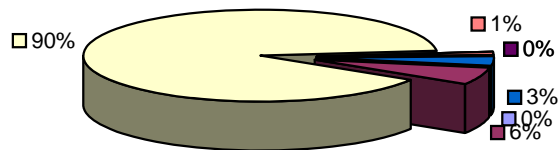
DAY : 20100616

Hourly average peak load			
MW	9732	Hour	14,00

ELECTRICITY CONSUMPTION DURING PEAK LOAD		
TOTAL	9732	100,00
1. ELECTRICITY SECTOR	9	0,09
2. HV INDUSTRIAL CUSTOMERS	589	6,05
3. DISTRIBUTION NETWORK	8696	89,35
4. AUTOPRODUCERS	0	0,00
5. PUMPING	0	0,00
6. MINES	111	1,14
7. SYSTEM LOSSES	327	3,36

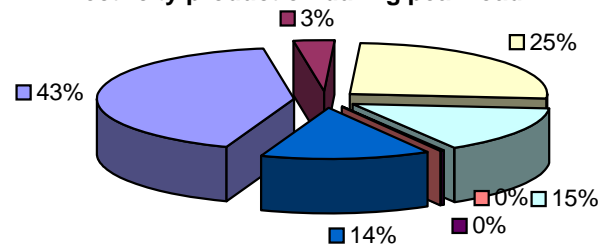
ELECTRICITY PRODUCTION DURING PEAK LOAD		
TOTAL	9732	100,00
1. LIGNITE	4089	42,02
2. OIL	327	3,36
3. NATURAL GAS	2474	25,42
4. HYDRO	1468	15,08
5. RENEWABLE	32	0,33
6. OTHER SOURCES	1	0,01
7. EXCHANGE BALANCE	1341	13,78

Electricity consumption during peak load



- 1. ELECTRICITY SECTOR
- 2. HV INDUSTRIAL CUSTOMERS
- 3. DISTRIBUTION NETWORK
- 4. AUTOPRODUCERS
- 5. PUMPING
- 6. MINES
- 7. SYSTEM LOSSES

Electricity production during peak load



- 1. LIGNITE
- 2. OIL
- 3. NATURAL GAS
- 4. HYDRO
- 5. RENEWABLE
- 6. OTHER SOURCES
- 7. EXCHANGE BALANCE