



TRANSMISSION SYSTEM ENERGY BALANCE MONTHLY
REPORT

Info :A. Grassou +30 210 9466905

	AUGUST 2009	COMPARED TO LAST YEAR(%)	JANUARY -AUGUST 2009	COMPARED TO LAST YEAR (%)****
PRODUCTION AND EXCHANGE BALANCE (MWh)				
TOTAL PRODUCTION & EXCHANGE BALANCE	4.771.922	-11,55	35.987.434	-6,81
TOTAL NET PRODUCTION	4.405.118	-7,87	32.356.022	-6,50
CLASSIFICATION				
LIGNITE	2.856.380	1,94	20.795.114	6,60
OIL	95.550	-66,15	1.634.000	-26,51
NATURAL GAS	872.558	-29,66	5.625.734	-41,93
HYDRO	389.178	36,42	3.099.122	42,35
*RENEWABLE AND OTHER SOURCES	191.452	11,78	1.202.052	19,35
EXCHANGE BALANCE	366.804	-40,26	3.631.412	-9,50
IMPORTS	658.728		5.491.688	
from TURKEY	0		0	
from ALBANIA	0		61.092	
from FYROM	354.473		2.855.254	
from BULGARIA	299.926		2.398.890	
from ITALY	4.329		176.452	
EXPORTS	291.924		1.860.276	
to TURKEY	0		0	
to ALBANIA	129.633		491.161	
to FYROM	0		133	
to BULGARIA	0		3	
to ITALY	162.291		1.368.979	

CONSUMPTION (MWh)						
TOTAL CONSUMPTION	4.771.922	-11,55	35.987.434	-6,81		
NET CONSUMPTION	4.756.189	-10,27	35.668.885	-5,74		
PUMPING	15.733		318.549			
CLASSIFICATION						
CONSUMPTION OF ELECTRICITY SECTOR	9.940		94.126			
HV INDUSTRIAL CUSTOMERS	417.115	-29,30	4.030.295	-21,20		
DISTRIBUTION NETWORK	4.126.395	-8,09	29.983.650	-3,71		
** AUTOPRODUCERS	0		0			
PUMPING	15.733		318.549			
MINES	85.013	-0,19	652.001	3,02		
SYSTEM LOSSES	117.726		908.813			
SYSTEM POWER (MW)						
SYSTEM INSTANT PEAK LOAD	9.402	***	9.828	***		
date / time of peak load	04/08/09	14:00	24/07/09	14:00		
Athens (ROUF) temperature at peak time (°C)	36		40			
HOURLY AVERAGE LOAD IN ATTIKI	2831		3086			

NOTE:

- * Includes only the HV substations
- ** They are included in the HV INDUSTRIAL CUSTOMERS
- *** Value from SCADA SYSTEM
- **** Referred to 365-day year



HELLENIC TRANSMISSION
SYSTEM OPERATOR

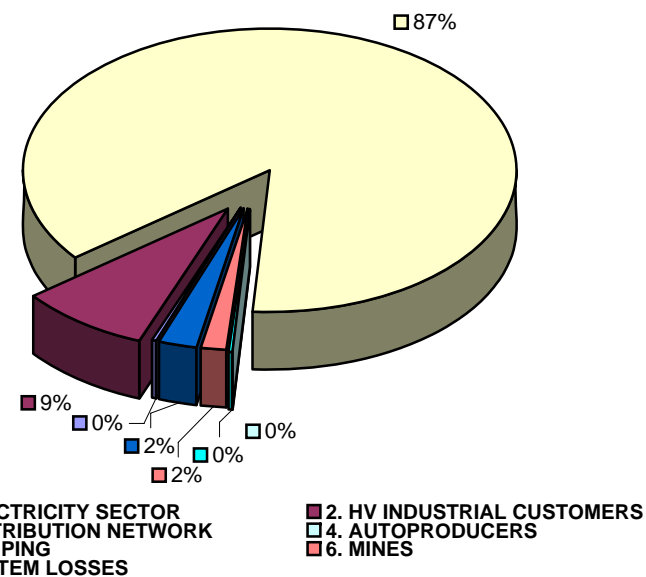
TOTAL ELECTRICITY CONSUMPTION

(MWH)

Month : AUGUST 2009

TOTAL ELECTRICITY CONSUMPTION	MONTHLY TOTALS	(%)
CLASSIFICATION	4.771.922	100,00
1. ELECTRICITY SECTOR	9.940	0,21
2. HV INDUSTRIAL CUSTOMERS	417.115	8,74
3. DISTRIBUTION NETWORK	4.126.395	86,47
4. AUTOPRODUCERS	0	0,00
5. PUMPING	15.733	0,33
6. MINES	85.013	1,78
7. SYSTEM LOSSES	117.726	2,47

MONTHLY ELECTRICITY CONSUMPTION



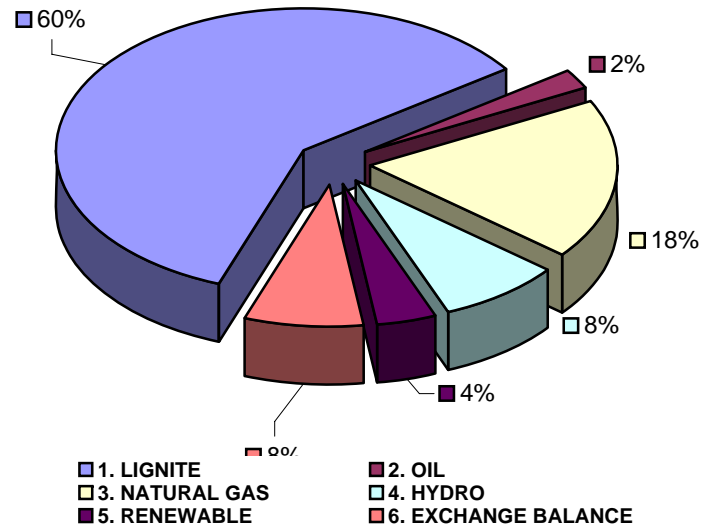


MONTHLY ELECTRICITY PRODUCTION & EXCHANGE BALANCE
(MWH)

Month : AUGUST 2009

TOTAL PRODUCTION & INTERCONNECTIONS	MONTH TOTALS	(%)
TOT.PROD. & INTERCON.	4.771.922	100,00
1. LIGNITE	2.856.380	59,86
2. OIL	95.550	2,00
3. NATURAL GAS	872.558	18,29
4. HYDRO	389.178	8,16
5. RENEWABLE	191.452	4,01
6. EXCHANGE BALANCE	366.804	7,69

MONTHLY ELECTRICITY PRODUCTION





MONTHLY PEAK LOAD ANALYSIS

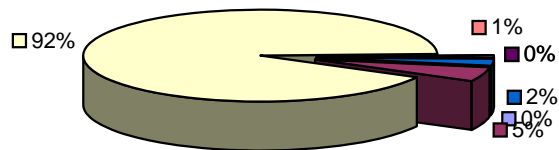
DAY : 20090804

Hourly average peak load			
MW	9329	Hour	14,00

ELECTRICITY CONSUMPTION DURING PEAK LOAD		
TOTAL	9329	100,00
1. ELECTRICITY SECTOR	3	0,03
2. HV INDUSTRIAL CUSTOMERS	462	4,95
3. DISTRIBUTION NETWORK	8546	91,61
4. AUTOPRODUCERS	0	0,00
5. PUMPING	0	0,00
6. MINES	89	0,95
7. SYSTEM LOSSES	229	2,45

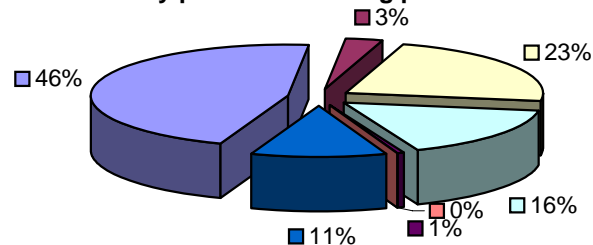
ELECTRICITY PRODUCTION DURING PEAK LOAD		
TOTAL	9329	100,00
1. LIGNITE	4312	46,22
2. OIL	262	2,81
3. NATURAL GAS	2133	22,86
4. HYDRO	1524	16,34
5. RENEWABLE	64	0,69
6. OTHER SOURCES	1	0,01
7. EXCHANGE BALANCE	1033	11,07

Electricity consumption during peak load



- 1. ELECTRICITY SECTOR
- 2. HV INDUSTRIAL CUSTOMERS
- 3. DISTRIBUTION NETWORK
- 4. AUTOPRODUCERS
- 5. PUMPING
- 6. MINES
- 7. SYSTEM LOSSES

Electricity production during peak load



- 1. LIGNITE
- 2. OIL
- 3. NATURAL GAS
- 4. HYDRO
- 5. RENEWABLE
- 6. OTHER SOURCES
- 7. EXCHANGE BALANCE