



TRANSMISSION SYSTEM ENERGY BALANCE MONTHLY
REPORT

Info :A. Grassou +30 210 9466905

	JANUARY 2009	COMPARED TO LAST YEAR(%)	JANUARY -JANUARY 2009	COMPARED TO LAST YEAR(%)
PRODUCTION AND EXCHANGE BALANCE (MWh)				
TOTAL PRODUCTION & EXCHANGE BALANCE	4.647.227	-6,37	4.647.227	-6,37
TOTAL NET PRODUCTION	4.363.361	-7,24	4.363.361	-7,24
CLASSIFICATION				
LIGNITE	2.793.927	1,23	2.793.927	1,23
OIL	386.573	12,42	386.573	12,42
NATURAL GAS	715.411	-40,55	715.411	-40,55
HYDRO	280.815	0,64	280.815	0,64
*RENEWABLE AND OTHER SOURCES	186.635	58,38	186.635	58,38
EXCHANGE BALANCE	283.866	9,40	283.866	9,40
IMPORTS	581.067		581.067	
from TURKEY	0		0	
from ALBANIA	124		124	
from FYROM	295.331		295.331	
from BULGARIA	271.414		271.414	
from ITALY	14.198		14.198	
EXPORTS	297.201		297.201	
to TURKEY	0		0	
to ALBANIA	135.099		135.099	
to FYROM	8		8	
to BULGARIA	0		0	
to ITALY	162.094		162.094	

CONSUMPTION (MWh)					
TOTAL CONSUMPTION	4.647.227	-6,37	4.647.227	-6,37	
NET CONSUMPTION	4.563.997	-6,11	4.563.997	-6,11	
PUMPING	83.230		83.230		
CLASSIFICATION					
CONSUMPTION OF ELECTRICITY SECTOR	9.082		9.082		
HV INDUSTRIAL CUSTOMERS	506.913	-23,16	506.913	-23,16	
DISTRIBUTION NETWORK	3.830.742	-4,21	3.830.742	-4,21	
** AUTOPRODUCERS	0		0		
PUMPING	83.230		83.230		
MINES	77.986	-14,35	77.986	-14,35	
SYSTEM LOSSES	139.274		139.274		
SYSTEM POWER (MW)					
SYSTEM INSTANT PEAK LOAD	8.332	***	8.332	***	
date / time of peak load	13/01/09	19:00	13/01/09	19:00	
Athens (ROUF) temperature at peak time (°C)	8		8		
HOURLY AVERAGE LOAD IN ATTIKI	3059		3059		

NOTE:

- * Includes only the HV substations
- ** They are included in the HV INDUSTRIAL CUSTOMERS
- *** Value from SCADA SYSTEM



HELLENIC TRANSMISSION
SYSTEM OPERATOR

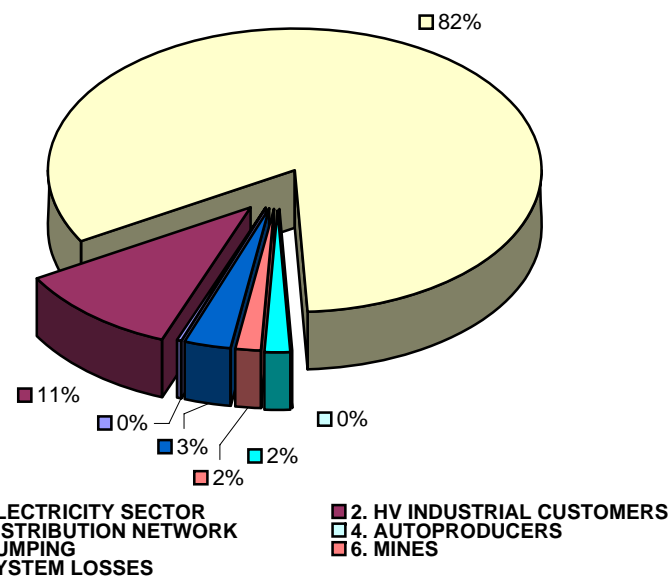
TOTAL ELECTRICITY CONSUMPTION

(MWH)

Month : JANUARY 2009

TOTAL ELECTRICITY CONSUMPTION	MONTHLY TOTALS	(%)
CLASSIFICATION	4.647.227	100,00
1. ELECTRICITY SECTOR	9.082	0,20
2. HV INDUSTRIAL CUSTOMERS	506.913	10,91
3. DISTRIBUTION NETWORK	3.830.742	82,43
4. AUTOPRODUCERS	0	0,00
5. PUMPING	83.230	1,79
6. MINES	77.986	1,68
7. SYSTEM LOSSES	139.274	3,00

MONTHLY ELECTRICITY CONSUMPTION



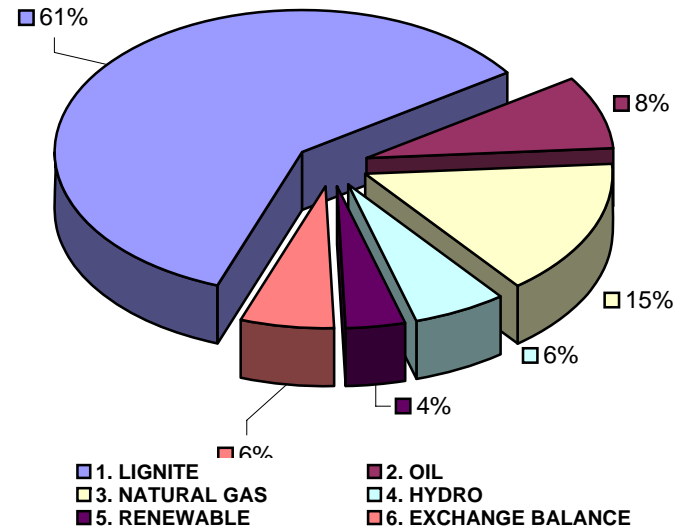


MONTHLY ELECTRICITY PRODUCTION & EXCHANGE BALANCE
(MWH)

Month : JANUARY 2009

TOTAL PRODUCTION & INTERCONNECTIONS	MONTH TOTALS	(%)
TOT.PROD. & INTERCON.	4.647.227	100,00
1. LIGNITE	2.793.927	60,12
2. OIL	386.573	8,32
3. NATURAL GAS	715.411	15,39
4. HYDRO	280.815	6,04
5. RENEWABLE	186.635	4,02
6. EXCHANGE BALANCE	283.866	6,11

MONTHLY ELECTRICITY PRODUCTION





MONTHLY PEAK LOAD ANALYSIS

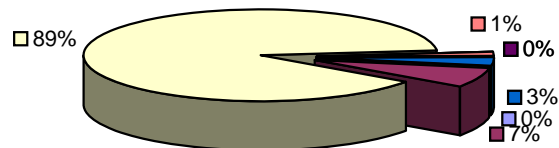
DAY : 20090113

Hourly average peak load			
MW	8332	Hour	19,00

ELECTRICITY CONSUMPTION DURING PEAK LOAD		
TOTAL	8332	100,00
1. ELECTRICITY SECTOR	5	0,06
2. HV INDUSTRIAL CUSTOMERS	563	6,76
3. DISTRIBUTION NETWORK	7405	88,87
4. AUTOPRODUCERS	0	0,00
5. PUMPING	0	0,00
6. MINES	101	1,21
7. SYSTEM LOSSES	258	3,10

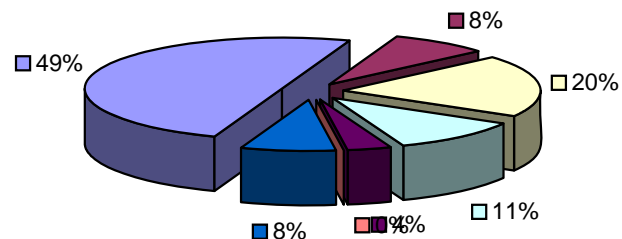
ELECTRICITY PRODUCTION DURING PEAK LOAD		
TOTAL	8332	100,00
1. LIGNITE	4164	49,98
2. OIL	681	8,17
3. NATURAL GAS	1642	19,71
4. HYDRO	891	10,69
5. RENEWABLE	301	3,61
6. OTHER SOURCES	1	0,01
7. EXCHANGE BALANCE	652	7,83

Electricity consumption during peak load



- 1. ELECTRICITY SECTOR
- 2. HV INDUSTRIAL CUSTOMERS
- 3. DISTRIBUTION NETWORK
- 4. AUTOPRODUCERS
- 5. PUMPING
- 6. MINES
- 7. SYSTEM LOSSES

Electricity production during peak load



- 1. LIGNITE
- 2. OIL
- 3. NATURAL GAS
- 4. HYDRO
- 5. RENEWABLE
- 6. OTHER SOURCES
- 7. EXCHANGE BALANCE