



**INDEPENDENT POWER TRANSMISSION  
SYSTEM OPERATOR**

**TRANSMISSION SYSTEM ENERGY BALANCE  
MONTHLY REPORT**

Info :K. Petsinis +30 210 9466888

	JUNE 2012	COMPARED TO LAST YEAR(%)	JANUARY - JUNE 2012	COMPARED TO LAST YEAR (%)
<b>PRODUCTION AND EXCHANGE BALANCE (MWh)</b>				
<b>TOTAL PRODUCTION &amp; EXCHANGE BALANCE</b>	<b>4.310.988</b>	<b>4,75%</b>	<b>24.512.266</b>	<b>-0,50%</b>
<b>TOTAL NET PRODUCTION</b>	<b>4.034.129</b>	<b>8,01%</b>	<b>23.714.187</b>	<b>2,50%</b>
<b>CLASSIFICATION</b>				
LIGNITE	2.378.912	23,32%	13.230.548	1,21%
OIL	1	-99,98%	66.168	1306,73%
NATURAL GAS	996.387	-21,44%	7.137.475	1,82%
HYDRO	392.567	-2,04%	1.738.485	-9,61%
RENEWABLE AND OTHER SOURCES *	266.262	99,29%	1.541.510	37,10%
<b>EXCHANGE BALANCE</b>	<b>276.860</b>	<b>-27,21%</b>	<b>798.079</b>	<b>-46,83%</b>
<b>IMPORTS</b>	<b>515.476</b>		<b>2.910.054</b>	
from TURKEY	74.196		959.089	
from ALBANIA	989		9.578	
from FYROM	233.764		652.446	
from BULGARIA	194.306		1.056.897	
from ITALY	12.221		232.044	
<b>EXPORTS</b>	<b>238.616</b>		<b>2.111.976</b>	
to TURKEY	692		862	
to ALBANIA	78.444		907.535	
to FYROM	22		116.035	
to BULGARIA	1		2.130	
to ITALY	159.457		1.085.414	



**INDEPENDENT POWER TRANSMISSION  
SYSTEM OPERATOR**

**TRANSMISSION SYSTEM ENERGY BALANCE  
MONTHLY REPORT**

Info :K. Petsinis +30 210 9466888

	JUNE 2012	COMPARED TO LAST YEAR(%)	JANUARY - JUNE 2012	COMPARED TO LAST YEAR (%)
<b>CONSUMPTION (MWh)</b>				
<b>TOTAL CONSUMPTION</b>	<b>4.310.988</b>	<b>4,75%</b>	<b>24.512.266</b>	<b>-0,50%</b>
<b>NET CONSUMPTION</b>	<b>4.303.507</b>	<b>4,91%</b>	<b>24.328.408</b>	<b>-0,65%</b>
<b>PUMPING</b>	<b>7.481</b>		<b>183.858</b>	
<b>CLASSIFICATION</b>				
CONSUMPTION OF ELECTRICITY SECTOR	15.031		89.646	
HV INDUSTRIAL CUSTOMERS	551.636	-2,10%	3.234.686	-3,53%
DISTRIBUTION NETWORK	3.552.820	5,66%	19.908.777	-0,22%
AUTOPRODUCERS **	0		0	
PUMPING	7.481		183.858	
MINES	75.933	36,18%	466.717	-0,42%
SYSTEM LOSSES	108.086		628.581	
<b>SYSTEM POWER (MW)</b>				
SYSTEM INSTANT PEAK LOAD	<b>8.474</b> ***		<b>8.734</b> ***	
Date of peak load	26/06/12		31/01/12	
Hour of peak load	14		0:00	
Athens (ROUF) temperature at peak time (oC)	37		1	
HOURLY AVERAGE LOAD IN ATTIKI	3.131		3.429	

**NOTE:**

\* Includes only the HV substations

\*\* Autoproducers are included in the HV INDUSTRIAL CUSTOMERS

\*\*\* Value from SCADA SYSTEM

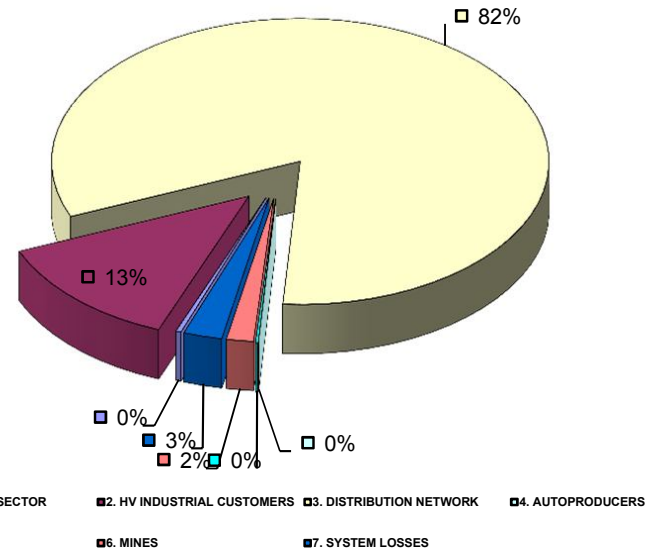


**INDEPENDENT POWER  
TRANSMISSION OPERATOR**

**TOTAL ELECTRICITY CONSUMPTION  
(MWh)  
Month : JUNE 2012**

TOTAL ELECTRICITY CONSUMPTION	MONTHLY TOTALS	(%)
<b>CLASSIFICATION</b>	<b>4.310.988</b>	<b>100,00%</b>
<b>1. ELECTRICITY SECTOR</b>	<b>15.031</b>	<b>0,35%</b>
<b>2. HV INDUSTRIAL CUSTOMERS</b>	<b>551.636</b>	<b>12,80%</b>
<b>3. DISTRIBUTION NETWORK</b>	<b>3.552.820</b>	<b>82,41%</b>
<b>4. AUTOPRODUCERS</b>	<b>0</b>	<b>0,00%</b>
<b>5. PUMPING</b>	<b>7.481</b>	<b>0,17%</b>
<b>6. MINES</b>	<b>75.933</b>	<b>1,76%</b>
<b>7. SYSTEM LOSSES</b>	<b>108.086</b>	<b>2,51%</b>

**MONTHLY ELECTRICITY CONSUMPTION**





**INDEPENDENT POWER  
TRANSMISSION OPERATOR**

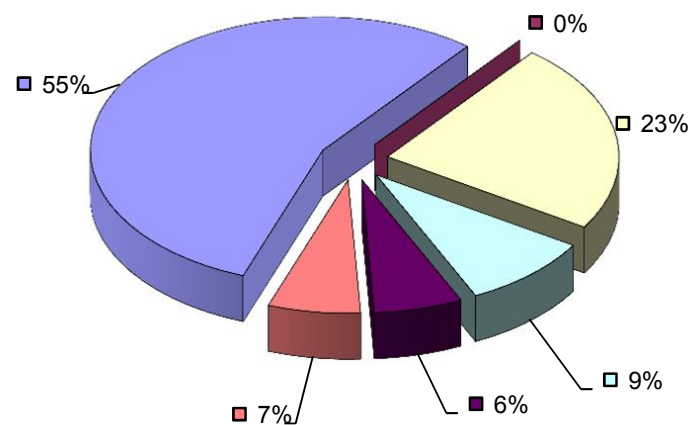
**MONTHLY ELECTRICITY PRODUCTION & EXCHANGE BALANCE**

(MWh)

Month : **JUNE 2012**

<b>TOTAL PRODUCTION &amp; INTERCONNECTIONS</b>	<b>MONTH TOTALS</b>	<b>(%)</b>
<b>TOT.PROD. &amp; INTERCON.</b>	<b>4.310.988</b>	<b>100%</b>
<b>1. LIGNITE</b>	<b>2.378.912</b>	<b>55,18%</b>
<b>2. OIL</b>	<b>1</b>	<b>0,00%</b>
<b>3. NATURAL GAS</b>	<b>996.387</b>	<b>23,11%</b>
<b>4. HYDRO</b>	<b>392.567</b>	<b>9,11%</b>
<b>5. RENEWABLE</b>	<b>266.262</b>	<b>6,18%</b>
<b>6. EXCHANGE BALANCE</b>	<b>276.860</b>	<b>6,42%</b>

**MONTHLY ELECTRICITY PRODUCTION**



■ 1. LIGNITE ■ 2. OIL ■ 3. NATURAL GAS ■ 4. HYDRO ■ 5. RENEWABLE ■ 6. EXCHANGE BALANCE



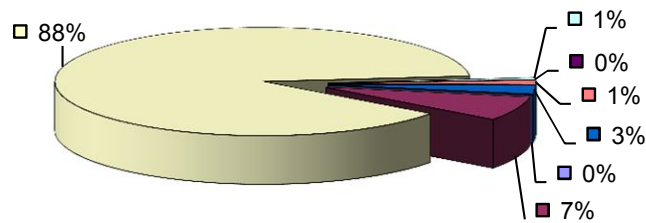
**MONTHLY PEAK LOAD ANALYSIS**

**DAY : 20120626**

<b>ELECTRICITY CONSUMPTION DURING PEAK LOAD</b>		
<i>TOTAL</i>	<i>8.361</i>	<i>100%</i>
1. ELECTRICITY SECTOR	11	0,13%
2. HV INDUSTRIAL CUSTOMERS	604	7,22%
3. DISTRIBUTION NETWORK	7.379	88,25%
4. AUTOPRODUCERS	52	0,62%
5. PUMPING	0	0,00%
6. MINES	106	1,27%
7. SYSTEM LOSSES	210	2,51%

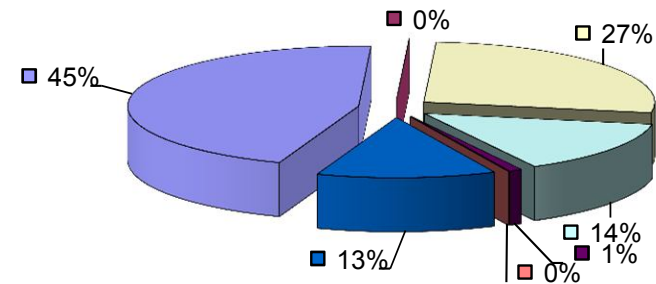
<b>ELECTRICITY PRODUCTION DURING PEAK LOAD</b>		
<i>TOTAL</i>	<i>8.361</i>	<i>100%</i>
1. LIGNITE	3.787	45,30%
2. OIL	0	0,00%
3. NATURAL GAS	2.259	27,01%
4. HYDRO	1.192	14,26%
5. RENEWABLE	77	0,92%
6. OTHER SOURCES	2	0,02%
7. EXCHANGE BALANCE	1.045	12,50%

**Electricity consumption during peak load**



- 1. ELECTRICITY SECTOR
- 2. HV INDUSTRIAL CUSTOMERS
- 3. DISTRIBUTION NETWORK
- 4. AUTOPRODUCERS
- 5. PUMPING
- 6. MINES
- 7. SYSTEM LOSSES

**Electricity production during peak load**



- 1. LIGNITE
- 2. OIL
- 3. NATURAL GAS
- 4. HYDRO
- 5. RENEWABLE
- 6. OTHER SOURCES
- 7. EXCHANGE BALANCE