



HELLENIC TRANSMISSION
SYSTEM OPERATOR

TRANSMISSION SYSTEM ENERGY BALANCE MONTHLY
REPORT

Info :A. Dagoumas +30 210 9466810

	OCTOBER 2011	COMPARED TO LAST YEAR(%)	JANUARY - OCTOBER 2011	COMPARED TO LAST YEAR (%)
PRODUCTION AND EXCHANGE BALANCE (MWh)				
TOTAL PRODUCTION & EXCHANGE BALANCE	3,995,003	-0.99	43,106,493	-1.95
TOTAL NET PRODUCTION	3,804,854	0.20	40,348,540	3.92
CLASSIFICATION				
LIGNITE	2,135,956	-0.06	22,689,568	-3.03
OIL	112	0.00	8,576	-92.43
NATURAL GAS	1,183,871	16.88	12,402,024	43.56
HYDRO	207,070	-57.23	3,219,527	-36.87
*RENEWABLE AND OTHER SOURCES	277,845	70.41	2,028,843	28.81
EXCHANGE BALANCE	190,149	-19.94	2,757,953	-46.34
IMPORTS	475,916		5,954,077	
from TURKEY	223,957		2,088,411	
from ALBANIA	42		3,391	
from FYROM	61,610		1,421,852	
from BULGARIA	186,105		2,360,200	
from ITALY	4,202		80,223	
EXPORTS	285,767		3,196,125	
to TURKEY	152		175	
to ALBANIA	164,382		1,665,584	
to FYROM	9,134		51,115	
to BULGARIA	0		0	
to ITALY	112,099		1,479,251	

CONSUMPTION (MWh)				
TOTAL CONSUMPTION	3,995,003	-0.99	43,106,493	-1.95
NET CONSUMPTION	3,946,143	-2.19	42,847,811	-2.46
PUMPING	48,860		258,681	
CLASSIFICATION				
CONSUMPTION OF ELECTRICITY SECTOR	19,847		160,982	
HV INDUSTRIAL CUSTOMERS	568,973	3.29	5,571,571	5.78
DISTRIBUTION NETWORK	3,173,922	-3.03	35,251,962	-3.20
** AUTOPRODUCERS	0		0	
PUMPING	48,860		258,681	
MINES	87,441	13.46	805,367	0.61
SYSTEM LOSSES	95,960		1,057,931	

SYSTEM POWER (MW)				
SYSTEM INSTANT PEAK LOAD	7,439	***	10,055	***
date / time of peak load	17/10/11	21:00	20/07/11	14:00
Athens (ROUF) temperature at peak time (°C)	17		38	
HOURLY AVERAGE LOAD IN ATTIKI	2637		3449	

NOTE:

- * Includes only the HV substations
- ** They are included in the HV INDUSTRIAL CUSTOMERS
- *** Value from SCADA SYSTEM

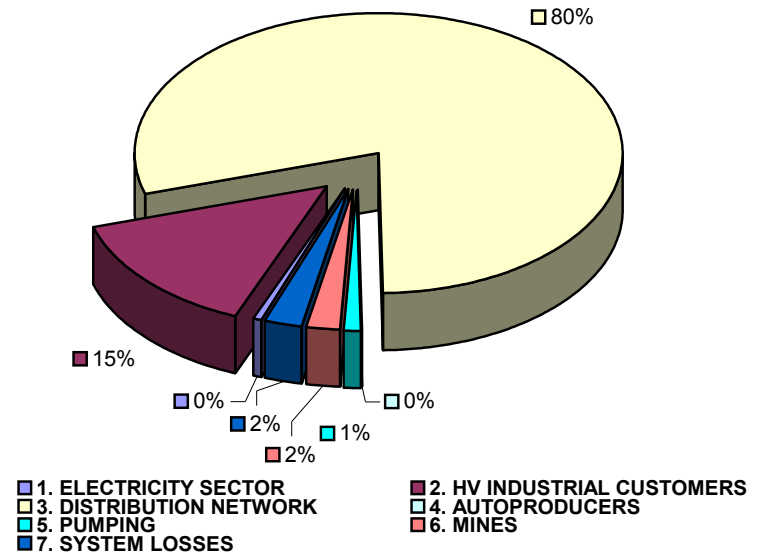


HELLENIC TRANSMISSION
SYSTEM OPERATOR

**TOTAL ELECTRICITY CONSUMPTION
(MWH)
Month : OCTOBER 2011**

TOTAL ELECTRICITY CONSUMPTION	MONTHLY TOTALS	(%)
CLASSIFICATION	3,995,003	100.00
1. ELECTRICITY SECTOR	19,847	0.50
2. HV INDUSTRIAL CUSTOMERS	568,973	14.24
3. DISTRIBUTION NETWORK	3,173,922	79.45
4. AUTOPRODUCERS	0	0.00
5. PUMPING	48,860	1.22
6. MINES	87,441	2.19
7. SYSTEM LOSSES	95,960	2.40

MONTHLY ELECTRICITY CONSUMPTION



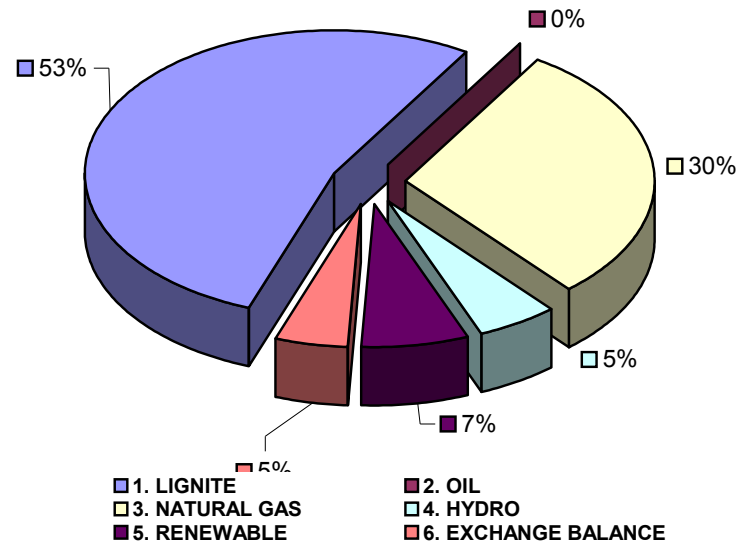


MONTHLY ELECTRICITY PRODUCTION & EXCHANGE BALANCE
(MWH)

Month : OCTOBER 2011

TOTAL PRODUCTION & INTERCONNECTIONS	MONTH TOTALS	(%)
TOT.PROD. & INTERCON.	3,995,003	100.00
1. LIGNITE	2,135,956	53.47
2. OIL	112	0.00
3. NATURAL GAS	1,183,871	29.63
4. HYDRO	207,070	5.18
5. RENEWABLE	277,845	6.95
6. EXCHANGE BALANCE	190,149	4.76

MONTHLY ELECTRICITY PRODUCTION





MONTHLY PEAK LOAD ANALYSIS

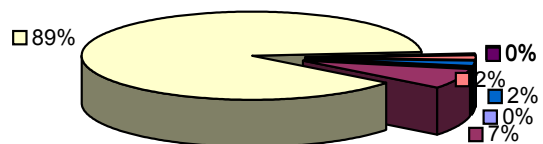
DAY : 20111017

<i>Hourly average peak load</i>			
MW	7298	Hour	21.00

ELECTRICITY CONSUMPTION DURING PEAK LOAD		
	TOTAL	
	7298	100.00
1. ELECTRICITY SECTOR	25	0.34
2. HV INDUSTRIAL CUSTOMERS	533	7.30
3. DISTRIBUTION NETWORK	6435	88.17
4. AUTOPRODUCERS	32	0.44
5. PUMPING	0	0.00
6. MINES	125	1.71
7. SYSTEM LOSSES	148	2.03

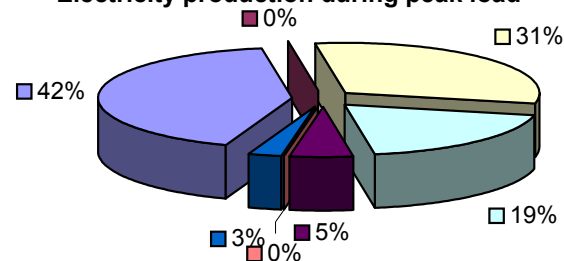
ELECTRICITY PRODUCTION DURING PEAK LOAD		
	TOTAL	
	7298	100.00
1. LIGNITE	3069	42.05
2. OIL	1	0.01
3. NATURAL GAS	2234	30.61
4. HYDRO	1403	19.22
5. RENEWABLE	387	5.30
6. OTHER SOURCES	1	0.01
7. EXCHANGE BALANCE	203	2.78

Electricity consumption during peak load



- 1. ELECTRICITY SECTOR
- 2. HV INDUSTRIAL CUSTOMERS
- 3. DISTRIBUTION NETWORK
- 4. AUTOPRODUCERS
- 5. PUMPING
- 6. MINES
- 7. SYSTEM LOSSES

Electricity production during peak load



- 1. LIGNITE
- 2. OIL
- 3. NATURAL GAS
- 4. HYDRO
- 5. RENEWABLE
- 6. OTHER SOURCES
- 7. EXCHANGE BALANCE