



TRANSMISSION SYSTEM ENERGY BALANCE MONTHLY
REPORT

Info :A. Dagoumas +30 210 9466810

	SEPTEMBER 2011	COMPARED TO LAST YEAR(%)	JANUARY - SEPTEMBER 2011	COMPARED TO LAST YEAR (%)
PRODUCTION AND EXCHANGE BALANCE (MWh)				
TOTAL PRODUCTION & EXCHANGE BALANCE	4,312,971	3.26	39,111,490	-2.05
TOTAL NET PRODUCTION	4,118,549	11.83	36,543,686	4.33
CLASSIFICATION				
LIGNITE	2,286,688	-8.55	20,553,612	-3.32
OIL	1	0.00	8,464	-92.53
NATURAL GAS	1,305,271	62.14	11,218,153	47.10
HYDRO	295,745	28.47	3,012,457	-34.73
*RENEWABLE AND OTHER SOURCES	230,842	56.90	1,750,998	24.00
EXCHANGE BALANCE	194,422	-60.64	2,567,804	-47.62
IMPORTS	461,624		5,478,161	
****from TURKEY	184,225		1,864,454	
from ALBANIA	91		3,349	
from FYROM	41,133		1,360,242	
from BULGARIA	232,878		2,174,095	
from ITALY	3,297		76,021	
EXPORTS	267,202		2,910,358	
****to TURKEY	10		23	
to ALBANIA	145,337		1,501,202	
to FYROM	15,896		41,981	
to BULGARIA	0		0	
to ITALY	105,959		1,367,152	

CONSUMPTION (MWh)				
TOTAL CONSUMPTION	4,312,971	3.26	39,111,490	-2.05
NET CONSUMPTION	4,279,857	2.62	38,901,668	-2.49
PUMPING	33,113		209,821	
CLASSIFICATION				
CONSUMPTION OF ELECTRICITY SECTOR	15,113		141,135	
HV INDUSTRIAL CUSTOMERS	581,657	7.24	5,002,598	6.07
DISTRIBUTION NETWORK	3,494,058	2.64	32,078,040	-3.22
** AUTOPRODUCERS	0		0	
PUMPING	33,113		209,821	
MINES	82,204	0.26	717,926	-0.76
SYSTEM LOSSES	106,826		961,971	

SYSTEM POWER (MW)				
SYSTEM INSTANT PEAK LOAD	8,145	***	10,055	***
date / time of peak load	15/09/11	21:00	20/07/11	14:00
Athens (ROUF) temperature at peak time (°C)	30		38	
HOURLY AVERAGE LOAD IN ATTIKI	2717		3449	

NOTE:

* Includes only the HV substations

** They are included in the HV INDUSTRIAL CUSTOMERS

*** Value from SCADA SYSTEM

****The imports/exports on Greece - Turkey interconnection concern physical flows through this tie-line that do not correspond to this neighbouring country. The Turkish System started a parallel operation to the European System on 18.9.2010 and the interconnection is currently running a testing period. During this period no imports/exports take place.

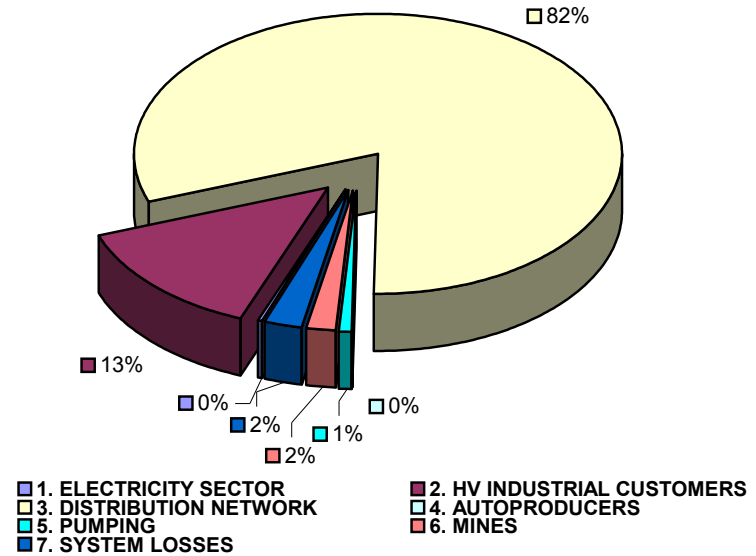


**TOTAL ELECTRICITY CONSUMPTION
(MWH)**

Month : **SEPTEMBER 2011**

TOTAL ELECTRICITY CONSUMPTION	MONTHLY TOTALS	(%)
CLASSIFICATION	4,312,971	100.00
1. ELECTRICITY SECTOR	15,113	0.35
2. HV INDUSTRIAL CUSTOMERS	581,657	13.49
3. DISTRIBUTION NETWORK	3,494,058	81.01
4. AUTOPRODUCERS	0	0.00
5. PUMPING	33,113	0.77
6. MINES	82,204	1.91
7. SYSTEM LOSSES	106,826	2.48

MONTHLY ELECTRICITY CONSUMPTION



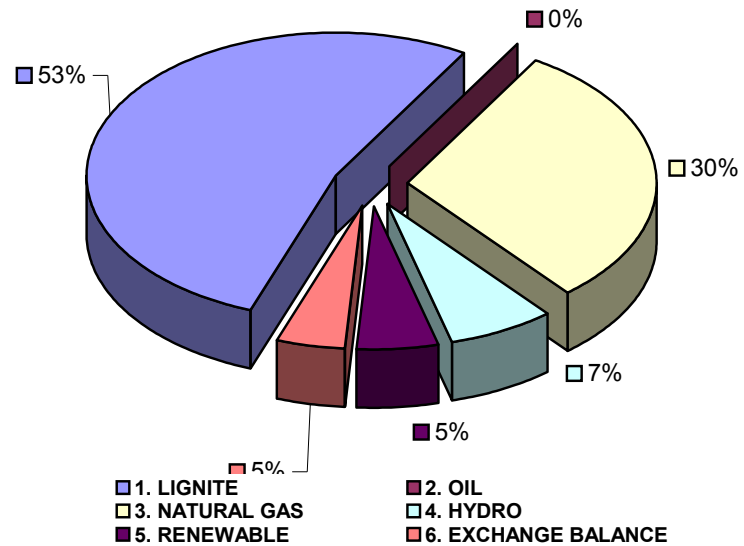


MONTHLY ELECTRICITY PRODUCTION & EXCHANGE BALANCE
(MWH)

Month : SEPTEMBER 2011

TOTAL PRODUCTION & INTERCONNECTIONS	MONTH TOTALS	(%)
TOT.PROD. & INTERCON.	4,312,969	100.00
1. LIGNITE	2,286,688	53.02
2. OIL	1	0.00
3. NATURAL GAS	1,305,271	30.26
4. HYDRO	295,745	6.86
5. RENEWABLE	230,842	5.35
6. EXCHANGE BALANCE	194,422	4.51

MONTHLY ELECTRICITY PRODUCTION





MONTHLY PEAK LOAD ANALYSIS

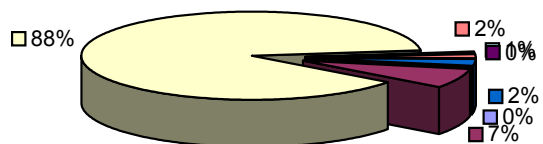
DAY : 20110915

<i>Hourly average peak load</i>			
MW	7981	Hour	21.00

ELECTRICITY CONSUMPTION DURING PEAK LOAD		
	TOTAL	
	7981	100.00
1. ELECTRICITY SECTOR	22	0.28
2. HV INDUSTRIAL CUSTOMERS	578	7.24
3. DISTRIBUTION NETWORK	6997	87.67
4. AUTOPRODUCERS	64	0.80
5. PUMPING	0	0.00
6. MINES	124	1.55
7. SYSTEM LOSSES	196	2.46

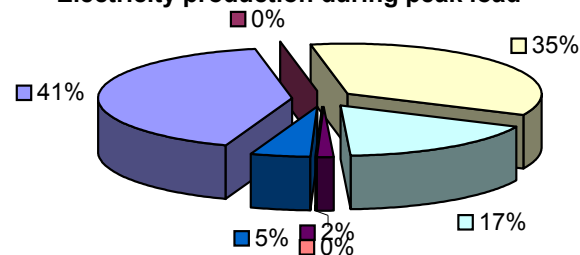
ELECTRICITY PRODUCTION DURING PEAK LOAD		
	TOTAL	
	7981	100.00
1. LIGNITE	3312	41.50
2. OIL	0	0.00
3. NATURAL GAS	2784	34.88
4. HYDRO	1366	17.12
5. RENEWABLE	127	1.59
6. OTHER SOURCES	2	0.03
7. EXCHANGE BALANCE	390	4.89

Electricity consumption during peak load



- 1. ELECTRICITY SECTOR
- 2. HV INDUSTRIAL CUSTOMERS
- 3. DISTRIBUTION NETWORK
- 4. AUTOPRODUCERS
- 5. PUMPING
- 6. MINES
- 7. SYSTEM LOSSES

Electricity production during peak load



- 1. LIGNITE
- 2. OIL
- 3. NATURAL GAS
- 4. HYDRO
- 5. RENEWABLE
- 6. OTHER SOURCES
- 7. EXCHANGE BALANCE