



TRANSMISSION SYSTEM ENERGY BALANCE MONTHLY
REPORT

Info :A. Dagoumas +30 210 9466810

	MAY 2011	COMPARED TO LAST YEAR(%)	JANUARY - MAY 2011	COMPARED TO LAST YEAR (%)
PRODUCTION AND EXCHANGE BALANCE (MWh)				
TOTAL PRODUCTION & EXCHANGE BALANCE	3,852,523	-5.58	20,520,744	-0.50
TOTAL NET PRODUCTION	3,776,837	9.42	19,400,139	5.96
CLASSIFICATION				
LIGNITE	2,102,840	-6.70	11,143,527	4.99
OIL	1,172	-85.06	1,433	-98.09
NATURAL GAS	1,209,075	49.11	5,741,726	60.58
HYDRO	262,770	-5.33	1,522,659	-51.92
*RENEWABLE AND OTHER SOURCES	200,980	97.69	990,794	12.80
EXCHANGE BALANCE	75,686	-87.96	1,120,605	-51.57
IMPORTS	469,188		2,907,910	
from TURKEY	219,215		1,027,115	
from ALBANIA	8		3,242	
from FYROM	85,571		756,533	
from BULGARIA	162,773		1,110,494	
from ITALY	1,621		10,526	
EXPORTS	393,501		1,787,304	
to TURKEY	5		9	
to ALBANIA	270,385		828,776	
to FYROM	18,756		22,854	
to BULGARIA	0		0	
to ITALY	104,355		935,665	

CONSUMPTION (MWh)				
TOTAL CONSUMPTION	3,852,524	-5.58	20,520,745	-0.50
NET CONSUMPTION	3,846,106	-5.57	20,384,773	-1.04
PUMPING	6,418		135,972	
CLASSIFICATION				
CONSUMPTION OF ELECTRICITY SECTOR	21,243		79,860	
HV INDUSTRIAL CUSTOMERS	588,517	4.07	2,789,585	8.03
DISTRIBUTION NETWORK	3,055,002	-7.14	16,590,193	-2.13
** AUTOPRODUCERS	0		0	
PUMPING	6,418		135,972	
MINES	84,360	2.05	412,942	2.60
SYSTEM LOSSES	96,984		512,193	

SYSTEM POWER (MW)				
SYSTEM INSTANT PEAK LOAD	6,949	***	8,359	***
date / time of peak load	24/05/11	22:00	03/03/11	20:00
Athens (ROUF) temperature at peak time (°C)	24		3	
HOURLY AVERAGE LOAD IN ATTIKI	2188		3242	

NOTE:

- * Includes only the HV substations
- ** They are included in the HV INDUSTRIAL CUSTOMERS
- *** Value from SCADA SYSTEM



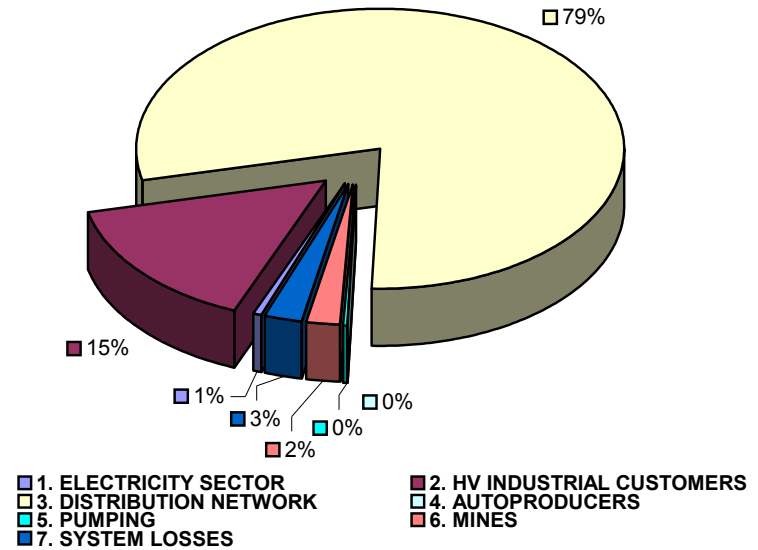
TOTAL ELECTRICITY CONSUMPTION

(MWH)

Month : 40664

TOTAL ELECTRICITY CONSUMPTION	MONTHLY TOTALS	(%)
CLASSIFICATION	3,852,524	100.00
1. ELECTRICITY SECTOR	21,243	0.55
2. HV INDUSTRIAL CUSTOMERS	588,517	15.28
3. DISTRIBUTION NETWORK	3,055,002	79.30
4. AUTOPRODUCERS	0	0.00
5. PUMPING	6,418	0.17
6. MINES	84,360	2.19
7. SYSTEM LOSSES	96,984	2.52

MONTHLY ELECTRICITY CONSUMPTION



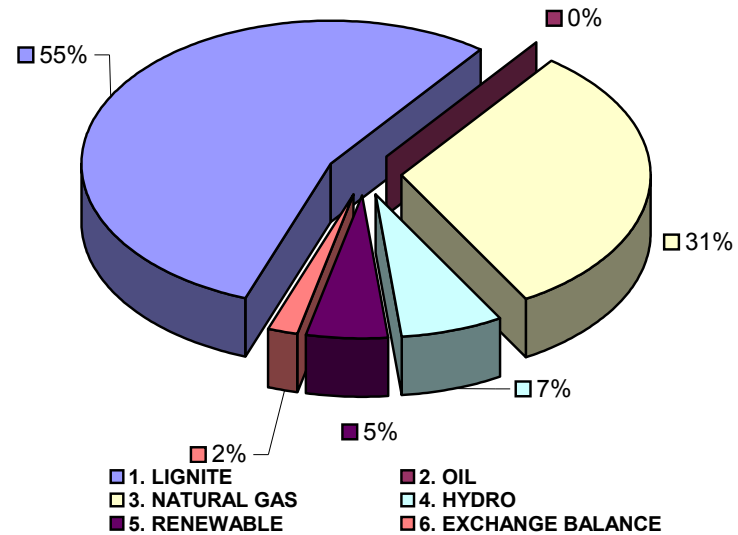


MONTHLY ELECTRICITY PRODUCTION & EXCHANGE BALANCE
(MWH)

Month : 40664

TOTAL PRODUCTION & INTERCONNECTIONS	MONTH TOTALS	(%)
TOT.PROD. & INTERCON.	3,852,523	100.00
1. LIGNITE	2,102,840	54.58
2. OIL	1,172	0.03
3. NATURAL GAS	1,209,075	31.38
4. HYDRO	262,770	6.82
5. RENEWABLE	200,980	5.22
6. EXCHANGE BALANCE	75,686	1.96

MONTHLY ELECTRICITY PRODUCTION





MONTHLY PEAK LOAD ANALYSIS

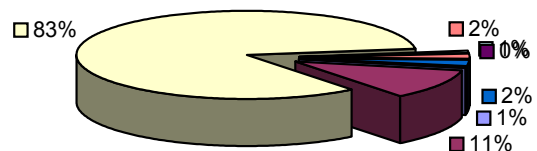
DAY : 20110524

Hourly average peak load			
MW	6755	Hour	22.00

ELECTRICITY CONSUMPTION DURING PEAK LOAD		
	TOTAL	
1. ELECTRICITY SECTOR	36	0.53
2. HV INDUSTRIAL CUSTOMERS	755	11.18
3. DISTRIBUTION NETWORK	5623	83.24
4. AUTOPRODUCERS	58	0.86
5. PUMPING	0	0.00
6. MINES	125	1.85
7. SYSTEM LOSSES	158	2.34

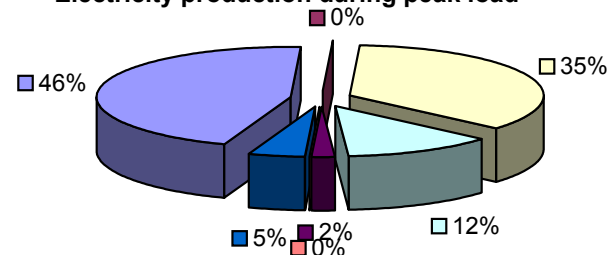
ELECTRICITY PRODUCTION DURING PEAK LOAD		
	TOTAL	
1. LIGNITE	3061	45.31
2. OIL	0	0.00
3. NATURAL GAS	2394	35.44
4. HYDRO	844	12.49
5. RENEWABLE	145	2.15
6. OTHER SOURCES	1	0.01
7. EXCHANGE BALANCE	310	4.59

Electricity consumption during peak load



- 1. ELECTRICITY SECTOR
- 2. HV INDUSTRIAL CUSTOMERS
- 3. DISTRIBUTION NETWORK
- 4. AUTOPRODUCERS
- 5. PUMPING
- 6. MINES
- 7. SYSTEM LOSSES

Electricity production during peak load



- 1. LIGNITE
- 2. OIL
- 3. NATURAL GAS
- 4. HYDRO
- 5. RENEWABLE
- 6. OTHER SOURCES
- 7. EXCHANGE BALANCE