



TRANSMISSION SYSTEM ENERGY BALANCE MONTHLY
REPORT

Info :A. Grassou +30 210 9466905

	MAY 2010	COMPARED TO LAST YEAR(%)	JANUARY - MAY 2010	COMPARED TO LAST YEAR (%)
PRODUCTION AND EXCHANGE BALANCE (MWh)				
TOTAL PRODUCTION & EXCHANGE BALANCE	4.080.379	-1,54	20.623.659	-2,48
TOTAL NET PRODUCTION	3.451.720	-7,31	18.309.569	-5,31
CLASSIFICATION				
LIGNITE	2.253.792	-4,71	10.613.485	-14,60
OIL	7.844	-95,02	74.973	-93,95
NATURAL GAS	810.862	0,79	3.575.578	20,37
HYDRO	277.559	-2,65	3.167.147	63,04
*RENEWABLE AND OTHER SOURCES	101.663	-9,02	878.386	16,14
EXCHANGE BALANCE	628.659	49,58	2.314.090	27,71
IMPORTS	630.336		3.142.952	
from TURKEY	0		0	
from ALBANIA	104.457		306.754	
from FYROM	358.605		1.669.780	
from BULGARIA	167.274		1.130.604	
from ITALY	0		35.814	
EXPORTS	1.677		828.862	
to TURKEY	0		0	
to ALBANIA	1.663		35.859	
to FYROM	0		0	
to BULGARIA	14		15	
to ITALY	0		792.988	

CONSUMPTION (MWh)					
TOTAL CONSUMPTION	4.080.379	-1,54	20.623.659	-2,48	
NET CONSUMPTION	4.073.047	-0,98	20.598.363	-1,60	
PUMPING	7.332		25.296		
CLASSIFICATION					
CONSUMPTION OF ELECTRICITY SECTOR	19.586		90.628		
HV INDUSTRIAL CUSTOMERS	565.487	7,39	2.582.156	2,11	
DISTRIBUTION NETWORK	3.289.909	-3,21	16.951.499	-2,62	
** AUTOPRODUCERS	0		0		
PUMPING	7.332		25.296		
MINES	82.669	0,14	402.485	0,19	
SYSTEM LOSSES	115.396		571.595		
SYSTEM POWER (MW)					
SYSTEM INSTANT PEAK LOAD	7.670	***	8.758	***	
date / time of peak load	11/05/10	22:00	27/01/10	22:00	
Athens (ROUF) temperature at peak time (°C)	24		7		
HOURLY AVERAGE LOAD IN ATTIKI	2250		3425		

NOTE:

- * Includes only the HV substations
- ** They are included in the HV INDUSTRIAL CUSTOMERS
- *** Value from SCADA SYSTEM



HELLENIC TRANSMISSION
SYSTEM OPERATOR

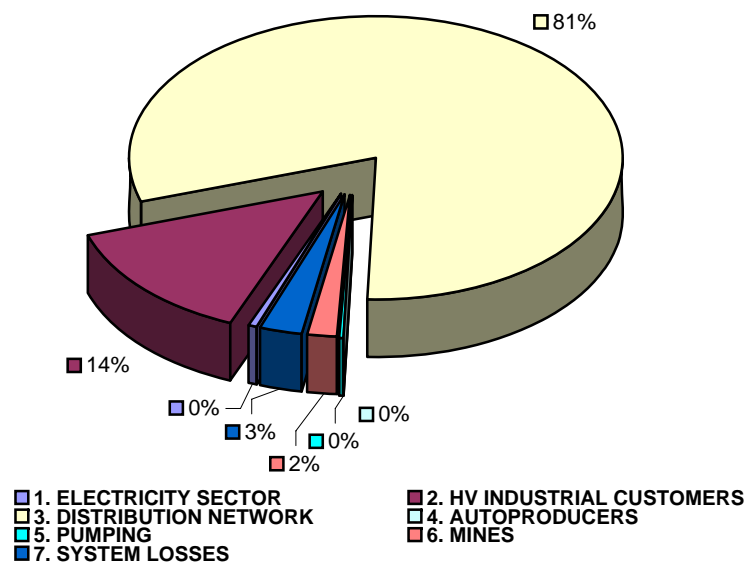
TOTAL ELECTRICITY CONSUMPTION

(MWH)

Month : MAY 2010

TOTAL ELECTRICITY CONSUMPTION	MONTHLY TOTALS	(%)
CLASSIFICATION	4.080.379	100,00
1. ELECTRICITY SECTOR	19.586	0,48
2. HV INDUSTRIAL CUSTOMERS	565.487	13,86
3. DISTRIBUTION NETWORK	3.289.909	80,63
4. AUTOPRODUCERS	0	0,00
5. PUMPING	7.332	0,18
6. MINES	82.669	2,03
7. SYSTEM LOSSES	115.396	2,83

MONTHLY ELECTRICITY CONSUMPTION





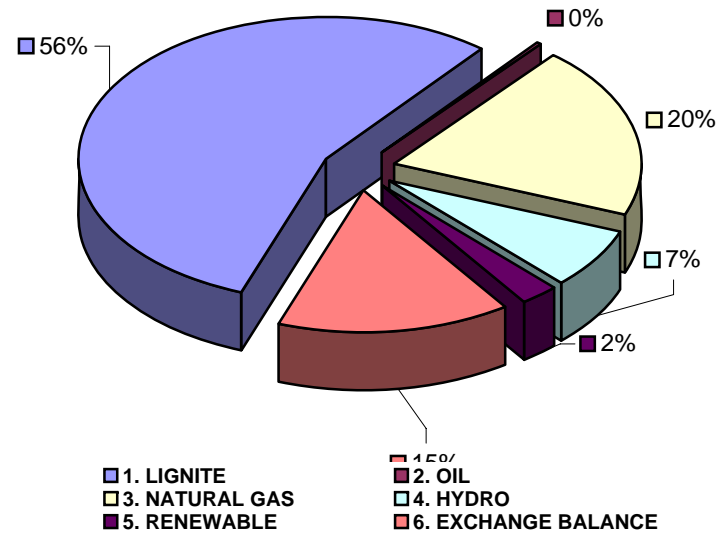
MONTHLY ELECTRICITY PRODUCTION & EXCHANGE BALANCE

(MWH)

Month : MAY 2010

TOTAL PRODUCTION & INTERCONNECTIONS	MONTH TOTALS	(%)
TOT.PROD. & INTERCON.	4.080.379	100,00
1. LIGNITE	2.253.792	55,23
2. OIL	7.844	0,19
3. NATURAL GAS	810.862	19,87
4. HYDRO	277.559	6,80
5. RENEWABLE	101.663	2,49
6. EXCHANGE BALANCE	628.659	15,41

MONTHLY ELECTRICITY PRODUCTION





MONTHLY PEAK LOAD ANALYSIS

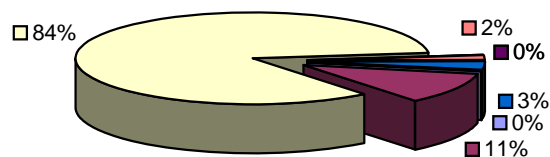
DAY : 20100511

Hourly average peak load			
MW	7341	Hour	22,00

ELECTRICITY CONSUMPTION DURING PEAK LOAD			
	TOTAL	7341	100,00
1. ELECTRICITY SECTOR		21	0,29
2. HV INDUSTRIAL CUSTOMERS		815	11,10
3. DISTRIBUTION NETWORK		6164	83,97
4. AUTOPRODUCERS		0	0,00
5. PUMPING		0	0,00
6. MINES		113	1,54
7. SYSTEM LOSSES		228	3,11

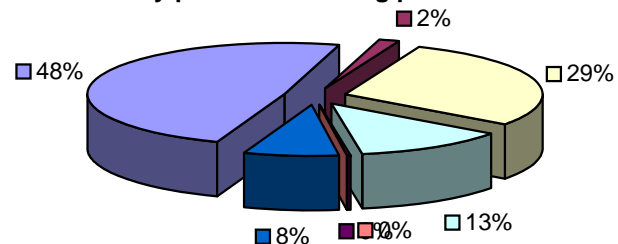
ELECTRICITY PRODUCTION DURING PEAK LOAD			
	TOTAL	7341	100,00
1. LIGNITE		3591	48,92
2. OIL		119	1,62
3. NATURAL GAS		2115	28,81
4. HYDRO		929	12,65
5. RENEWABLE		18	0,25
6. OTHER SOURCES		1	0,01
7. EXCHANGE BALANCE		568	7,74

Electricity consumption during peak load



- 1. ELECTRICITY SECTOR
- 2. HV INDUSTRIAL CUSTOMERS
- 3. DISTRIBUTION NETWORK
- 4. AUTOPRODUCERS
- 5. PUMPING
- 6. MINES
- 7. SYSTEM LOSSES

Electricity production during peak load



- 1. LIGNITE
- 2. OIL
- 3. NATURAL GAS
- 4. HYDRO
- 5. RENEWABLE
- 6. OTHER SOURCES
- 7. EXCHANGE BALANCE