



TRANSMISSION SYSTEM ENERGY BALANCE MONTHLY  
REPORT

Info :A. Grassou +30 210 9466905

	APRIL 2010	COMPARED TO LAST YEAR(%)	JANUARY - APRIL 2010	COMPARED TO LAST YEAR (%)
<b>PRODUCTION AND EXCHANGE BALANCE (MWh)</b>				
<b>TOTAL PRODUCTION &amp; EXCHANGE BALANCE</b>	<b>3.797.102</b>	<b>-0,66</b>	<b>16.543.280</b>	<b>-2,71</b>
<b>TOTAL NET PRODUCTION</b>	<b>3.162.382</b>	<b>-9,60</b>	<b>14.857.849</b>	<b>-4,83</b>
<b>CLASSIFICATION</b>				
LIGNITE	1.993.403	-13,93	8.359.693	-16,92
OIL	50	-99,96	67.129	-93,79
NATURAL GAS	687.463	38,82	2.764.716	27,65
HYDRO	308.860	-30,40	2.889.588	74,34
*RENEWABLE AND OTHER SOURCES	172.606	34,50	776.723	20,50
<b>EXCHANGE BALANCE</b>	<b>634.720</b>	<b>95,94</b>	<b>1.685.431</b>	<b>21,11</b>
<b>IMPORTS</b>	<b>706.313</b>		<b>2.512.616</b>	
from TURKEY	0		0	
from ALBANIA	90.527		202.297	
from FYROM	355.780		1.311.175	
from BULGARIA	242.759		963.330	
from ITALY	17.247		35.814	
<b>EXPORTS</b>	<b>71.593</b>		<b>827.185</b>	
to TURKEY	0		0	
to ALBANIA	747		34.196	
to FYROM	0		0	
to BULGARIA	0		1	
to ITALY	70.846		792.988	

<b>CONSUMPTION (MWh)</b>						
<b>TOTAL CONSUMPTION</b>	<b>3.797.102</b>	<b>-0,66</b>	<b>16.543.280</b>	<b>-2,71</b>		
<b>NET CONSUMPTION</b>	<b>3.790.482</b>	<b>-0,06</b>	<b>16.525.316</b>	<b>-1,75</b>		
<b>PUMPING</b>	<b>6.620</b>		<b>17.964</b>			
<b>CLASSIFICATION</b>						
CONSUMPTION OF ELECTRICITY SECTOR	20.523		71.042			
HV INDUSTRIAL CUSTOMERS	510.444	6,73	2.016.669	0,72		
DISTRIBUTION NETWORK	3.077.896	-1,62	13.661.590	-2,48		
** AUTOPRODUCERS	0		0			
PUMPING	6.620		17.964			
MINES	80.976	2,41	319.816	0,20		
SYSTEM LOSSES	100.643		456.199			
<b>SYSTEM POWER (MW)</b>						
SYSTEM INSTANT PEAK LOAD	<b>7.236</b>	<b>***</b>	<b>8.758</b>	<b>***</b>		
date / time of peak load	13/04/10	21:00	27/01/10	21:00		
Athens (ROUF) temperature at peak time (°C)	20		7			
HOURLY AVERAGE LOAD IN ATTIKI	2445		3425			

**NOTE:**

- \* Includes only the HV substations
- \*\* They are included in the HV INDUSTRIAL CUSTOMERS
- \*\*\* Value from SCADA SYSTEM



HELLENIC TRANSMISSION  
SYSTEM OPERATOR

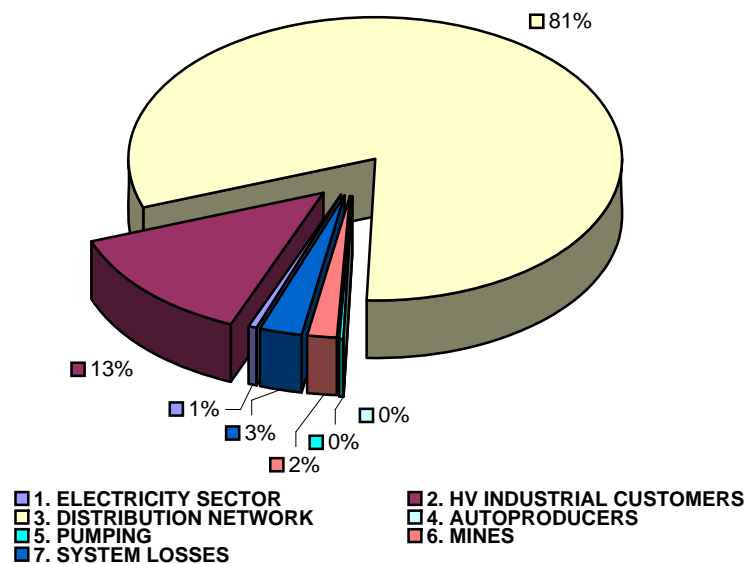
### TOTAL ELECTRICITY CONSUMPTION

(MWH)

Month : APRIL 2010

TOTAL ELECTRICITY CONSUMPTION	MONTHLY TOTALS	(%)
<b>CLASSIFICATION</b>	<b>3.797.102</b>	<b>100,00</b>
<b>1. ELECTRICITY SECTOR</b>	<b>20.523</b>	<b>0,54</b>
<b>2. HV INDUSTRIAL CUSTOMERS</b>	<b>510.444</b>	<b>13,44</b>
<b>3. DISTRIBUTION NETWORK</b>	<b>3.077.896</b>	<b>81,06</b>
<b>4. AUTOPRODUCERS</b>	<b>0</b>	<b>0,00</b>
<b>5. PUMPING</b>	<b>6.620</b>	<b>0,17</b>
<b>6. MINES</b>	<b>80.976</b>	<b>2,13</b>
<b>7. SYSTEM LOSSES</b>	<b>100.643</b>	<b>2,65</b>

### MONTHLY ELECTRICITY CONSUMPTION





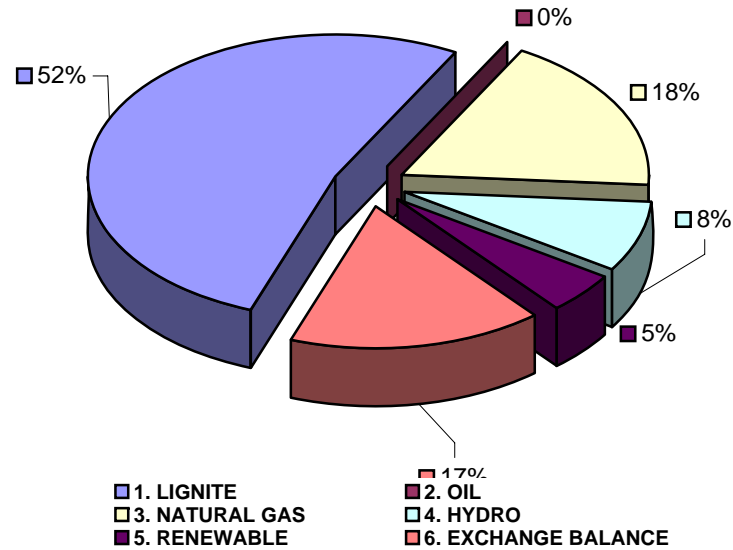
### MONTHLY ELECTRICITY PRODUCTION & EXCHANGE BALANCE

(MWH)

Month : APRIL 2010

TOTAL PRODUCTION & INTERCONNECTIONS	MONTH TOTALS	(%)
<b>TOT.PROD. &amp; INTERCON.</b>	<b>3.797.102</b>	<b>100,00</b>
1. LIGNITE	1.993.403	52,50
2. OIL	50	0,00
3. NATURAL GAS	687.463	18,10
4. HYDRO	308.860	8,13
5. RENEWABLE	172.606	4,55
6. EXCHANGE BALANCE	634.720	16,72

### MONTHLY ELECTRICITY PRODUCTION





MONTHLY PEAK LOAD ANALYSIS

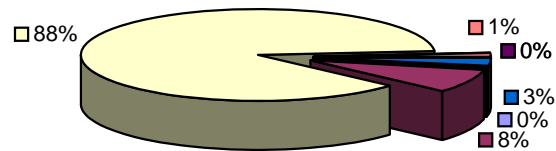
DAY : 20100413

Hourly average peak load			
MW	7065	Hour	21,00

ELECTRICITY CONSUMPTION DURING PEAK LOAD			
	TOTAL	7065	100,00
1. ELECTRICITY SECTOR	32		0,45
2. HV INDUSTRIAL CUSTOMERS	593		8,39
3. DISTRIBUTION NETWORK	6139		86,89
4. AUTOPRODUCERS	0		0,00
5. PUMPING	0		0,00
6. MINES	102		1,44
7. SYSTEM LOSSES	199		2,82

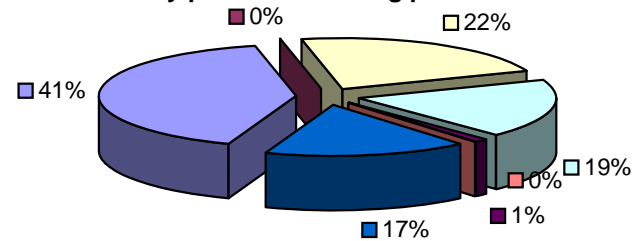
ELECTRICITY PRODUCTION DURING PEAK LOAD			
	TOTAL	7065	100,00
1. LIGNITE	2904		41,10
2. OIL	0		0,00
3. NATURAL GAS	1584		22,42
4. HYDRO	1320		18,68
5. RENEWABLE	88		1,25
6. OTHER SOURCES	1		0,01
7. EXCHANGE BALANCE	1168		16,53

Electricity consumption during peak load



- 1. ELECTRICITY SECTOR
- 2. HV INDUSTRIAL CUSTOMERS
- 3. DISTRIBUTION NETWORK
- 4. AUTOPRODUCERS
- 5. PUMPING
- 6. MINES
- 7. SYSTEM LOSSES

Electricity production during peak load



- 1. LIGNITE
- 2. OIL
- 3. NATURAL GAS
- 4. HYDRO
- 5. RENEWABLE
- 6. OTHER SOURCES
- 7. EXCHANGE BALANCE