



INDEPENDENT POWER TRANSMISSION
SYSTEM OPERATOR

TRANSMISSION SYSTEM ENERGY BALANCE
MONTHLY REPORT

Info :K. Petsinis +30 210 9466888

	DECEMBER 2012	COMPARED TO LAST YEAR(%)	JANUARY - DECEMBER 2012	COMPARED TO LAST YEAR (%)
PRODUCTION AND EXCHANGE BALANCE (MWh)				
TOTAL PRODUCTION & EXCHANGE BALANCE	4.454.599	-0,34%	50.558.165	-2,53%
TOTAL NET PRODUCTION	4.395.193	4,64%	48.773.999	0,28%
CLASSIFICATION				
LIGNITE	2.204.339	-11,46%	27.554.916	-0,06%
OIL	11.844		78.030	808,86%
NATURAL GAS	1.361.963	13,99%	14.135.934	-4,81%
HYDRO	506.768	108,53%	3.891.723	5,88%
RENEWABLE AND OTHER SOURCES *	310.279	13,74%	3.113.396	22,81%
EXCHANGE BALANCE	59.406	-77,94%	1.784.165	-44,80%
IMPORTS	414.561		5.954.044	
from TURKEY	136.381		1.703.401	
from ALBANIA	4.308		17.402	
from FYROM	96.533		1.603.777	
from BULGARIA	177.111		2.302.812	
from ITALY	228		326.652	
EXPORTS	355.156		4.169.878	
to TURKEY	127		3.909	
to ALBANIA	46.797		1.480.195	
to FYROM	1.832		147.122	
to BULGARIA	0		2.157	
to ITALY	306.400		2.536.495	



**INDEPENDENT POWER TRANSMISSION
SYSTEM OPERATOR**

**TRANSMISSION SYSTEM ENERGY BALANCE
MONTHLY REPORT**

Info :K. Petsinis +30 210 9466888

	DECEMBER 2012	COMPARED TO LAST YEAR(%)	JANUARY - DECEMBER 2012	COMPARED TO LAST YEAR (%)
CONSUMPTION (MWh)				
TOTAL CONSUMPTION	4.454.599	-0,34%	50.558.165	-2,53%
NET CONSUMPTION	4.436.771	0,97%	50.289.245	-2,34%
PUMPING	17.828		268.920	
CLASSIFICATION				
CONSUMPTION OF ELECTRICITY SECTOR	14.472		168.153	
HV INDUSTRIAL CUSTOMERS	527.260	3,34%	6.514.422	-1,60%
DISTRIBUTION NETWORK	3.708.833	0,99%	41.361.568	-2,51%
AUTOPRODUCERS **	0		0	
PUMPING	17.828		268.920	
MINES	77.008	-4,00%	924.288	-4,49%
SYSTEM LOSSES	109.198		1.320.815	
SYSTEM POWER (MW)				
SYSTEM INSTANT PEAK LOAD	8.604 ***		9.894 ***	
Date of peak load	13/12/12		16/07/12	
Hour of peak load	20		15	
Athens (ROUF) temperature at peak time (oC)	8		41	
HOURLY AVERAGE LOAD IN ATTIKI	2.610		3.562	

NOTE:

* Includes only the HV substations

** Autoproducers are included in the HV INDUSTRIAL CUSTOMERS

*** Value from SCADA SYSTEM

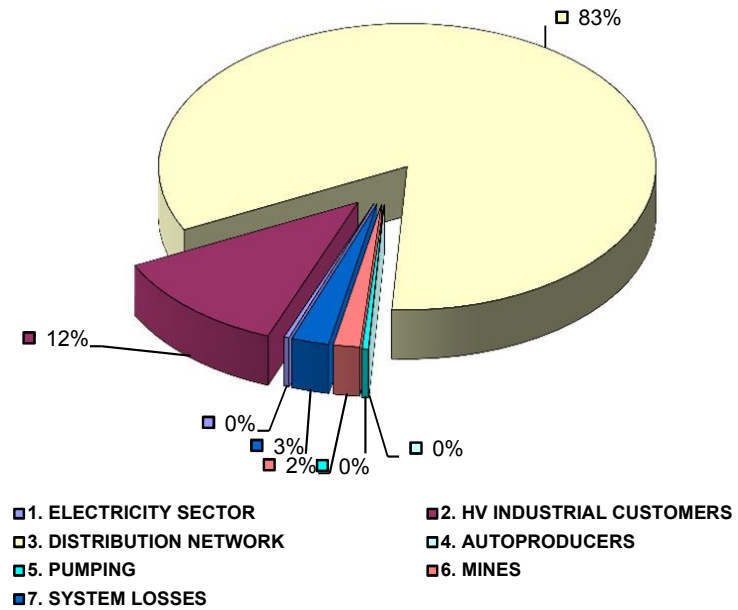


**INDEPENDENT POWER
TRANSMISSION OPERATOR**

**TOTAL ELECTRICITY CONSUMPTION
(MWh)
Month : DECEMBER 2012**

TOTAL ELECTRICITY CONSUMPTION	MONTHLY TOTALS	(%)
CLASSIFICATION	4.454.599	100,00%
1. ELECTRICITY SECTOR	14.472	0,32%
2. HV INDUSTRIAL CUSTOMERS	527.260	11,84%
3. DISTRIBUTION NETWORK	3.708.833	83,26%
4. AUTOPRODUCERS	0	0,00%
5. PUMPING	17.828	0,40%
6. MINES	77.008	1,73%
7. SYSTEM LOSSES	109.198	2,45%

MONTHLY ELECTRICITY CONSUMPTION





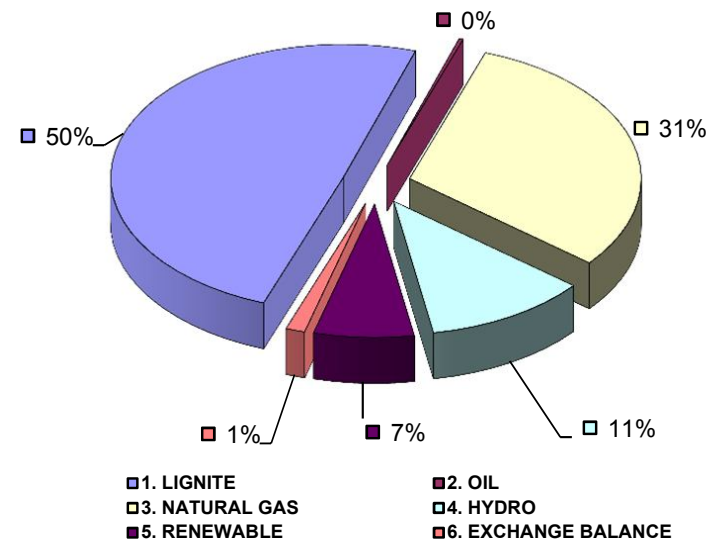
**INDEPENDENT POWER
TRANSMISSION OPERATOR**

**MONTHLY ELECTRICITY PRODUCTION & EXCHANGE BALANCE
(MWh)**

Month : **DECEMBER 2012**

TOTAL PRODUCTION & INTERCONNECTIONS	MONTH TOTALS	(%)
TOT.PROD. & INTERCON.	4.454.599	100%
1. LIGNITE	2.204.339	49,48%
2. OIL	11.844	0,27%
3. NATURAL GAS	1.361.963	30,57%
4. HYDRO	506.768	11,38%
5. RENEWABLE	310.279	6,97%
6. EXCHANGE BALANCE	59.406	1,33%

MONTHLY ELECTRICITY PRODUCTION





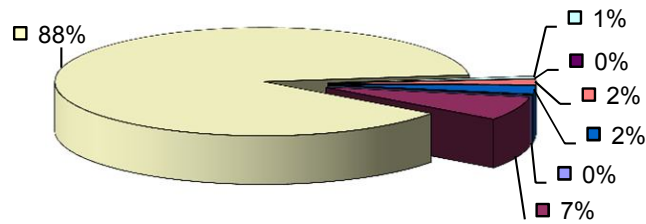
MONTHLY PEAK LOAD ANALYSIS

DAY 20121213

ELECTRICITY CONSUMPTION DURING PEAK LOAD		
<i>TOTAL</i>	<i>8.470</i>	<i>100%</i>
1. ELECTRICITY SECTOR	19	0,23%
2. HV INDUSTRIAL CUSTOMERS	596	7,04%
3. DISTRIBUTION NETWORK	7.449	87,94%
4. AUTOPRODUCERS	64	0,76%
5. PUMPING	0	0,00%
6. MINES	132	1,56%
7. SYSTEM LOSSES	209	2,47%

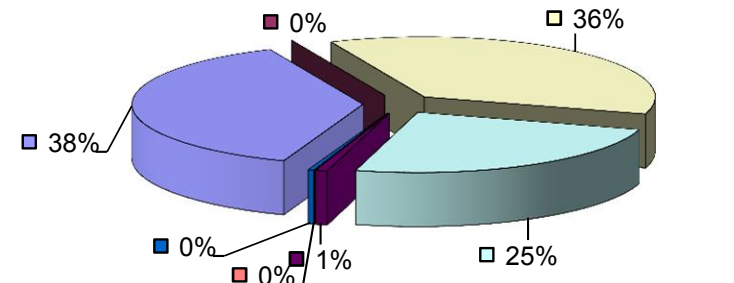
ELECTRICITY PRODUCTION DURING PEAK LOAD		
<i>TOTAL</i>	<i>8.470</i>	<i>100%</i>
1. LIGNITE	3.205	37,84%
2. OIL	0	0,00%
3. NATURAL GAS	3.069	36,23%
4. HYDRO	2.091	24,69%
5. RENEWABLE	69	0,82%
6. OTHER SOURCES	2	0,02%
7. EXCHANGE BALANCE	34	0,40%

Electricity consumption during peak load



- 1. ELECTRICITY SECTOR
- 2. HV INDUSTRIAL CUSTOMERS
- 3. DISTRIBUTION NETWORK
- 4. AUTOPRODUCERS
- 5. PUMPING
- 6. MINES
- 7. SYSTEM LOSSES

Electricity production during peak load



- 1. LIGNITE
- 2. OIL
- 3. NATURAL GAS
- 4. HYDRO
- 5. RENEWABLE
- 6. OTHER SOURCES
- 7. EXCHANGE BALANCE