



INDEPENDENT POWER TRANSMISSION
SYSTEM OPERATOR

TRANSMISSION SYSTEM ENERGY BALANCE
MONTHLY REPORT

Info :K. Petsinis +30 210 9466888

	OCTOBER 2012	COMPARED TO LAST YEAR(%)	JANUARY - OCTOBER 2012	COMPARED TO LAST YEAR (%)
PRODUCTION AND EXCHANGE BALANCE (MWh)				
TOTAL PRODUCTION & EXCHANGE BALANCE	3.749.200	-6,15%	42.324.163	-1,81%
TOTAL NET PRODUCTION	3.727.629	-2,03%	40.628.350	0,69%
CLASSIFICATION				
LIGNITE	2.328.425	9,01%	23.166.207	2,10%
OIL	4		66.186	671,73%
NATURAL GAS	996.304	-15,84%	11.832.347	-4,59%
HYDRO	155.178	-25,06%	3.076.028	-4,46%
RENEWABLE AND OTHER SOURCES *	247.719	-10,84%	2.487.582	22,61%
EXCHANGE BALANCE	21.571	-88,66%	1.695.813	-38,51%
IMPORTS	365.508		5.118.289	
from TURKEY	117.906		1.474.170	
from ALBANIA	770		11.163	
from FYROM	84.021		1.378.219	
from BULGARIA	162.314		1.929.536	
from ITALY	497		325.201	
EXPORTS	343.938		3.422.476	
to TURKEY	797		3.053	
to ALBANIA	129.968		1.347.520	
to FYROM	19.812		143.390	
to BULGARIA	27		2.157	
to ITALY	193.334		1.926.356	



**INDEPENDENT POWER TRANSMISSION
SYSTEM OPERATOR**

**TRANSMISSION SYSTEM ENERGY BALANCE
MONTHLY REPORT**

Info :K. Petsinis +30 210 9466888

	OCTOBER 2012	COMPARED TO LAST YEAR(%)	JANUARY - OCTOBER 2012	COMPARED TO LAST YEAR (%)
CONSUMPTION (MWh)				
TOTAL CONSUMPTION	3.749.200	-6,15%	42.324.163	-1,81%
NET CONSUMPTION	3.726.993	-5,55%	42.082.974	-1,79%
PUMPING	22.207		241.188	
CLASSIFICATION				
CONSUMPTION OF ELECTRICITY SECTOR	16.110		139.470	
HV INDUSTRIAL CUSTOMERS	580.523	2,03%	5.444.251	-2,29%
DISTRIBUTION NETWORK	2.950.686	-7,03%	34.623.911	-1,78%
AUTOPRODUCERS **	0		0	
PUMPING	22.207		241.188	
MINES	74.312	-15,01%	775.384	-3,72%
SYSTEM LOSSES	105.361		1.099.959	
SYSTEM POWER (MW)				
SYSTEM INSTANT PEAK LOAD	7.086 ***		9.894 ***	
Date of peak load	02/10/12		16/07/12	
Hour of peak load	21		15	
Athens (ROUF) temperature at peak time (oC)	29		41	
HOURLY AVERAGE LOAD IN ATTIKI	2.328		3.562	

NOTE:

* Includes only the HV substations

** Autoproducers are included in the HV INDUSTRIAL CUSTOMERS

*** Value from SCADA SYSTEM

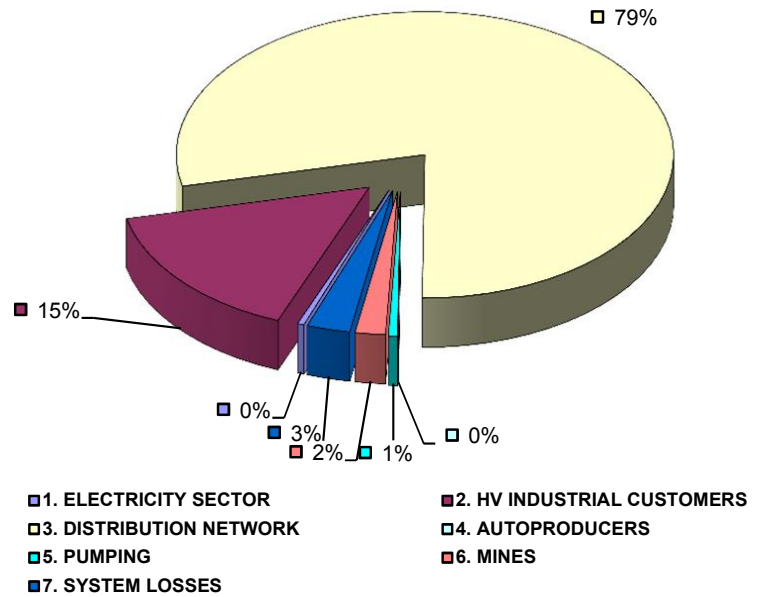


**INDEPENDENT POWER
TRANSMISSION OPERATOR**

**TOTAL ELECTRICITY CONSUMPTION
(MWh)
Month : OCTOBER 2012**

TOTAL ELECTRICITY CONSUMPTION	MONTHLY TOTALS	(%)
CLASSIFICATION	3.749.200	100,00%
1. ELECTRICITY SECTOR	16.110	0,43%
2. HV INDUSTRIAL CUSTOMERS	580.523	15,48%
3. DISTRIBUTION NETWORK	2.950.686	78,70%
4. AUTOPRODUCERS	0	0,00%
5. PUMPING	22.207	0,59%
6. MINES	74.312	1,98%
7. SYSTEM LOSSES	105.361	2,81%

MONTHLY ELECTRICITY CONSUMPTION





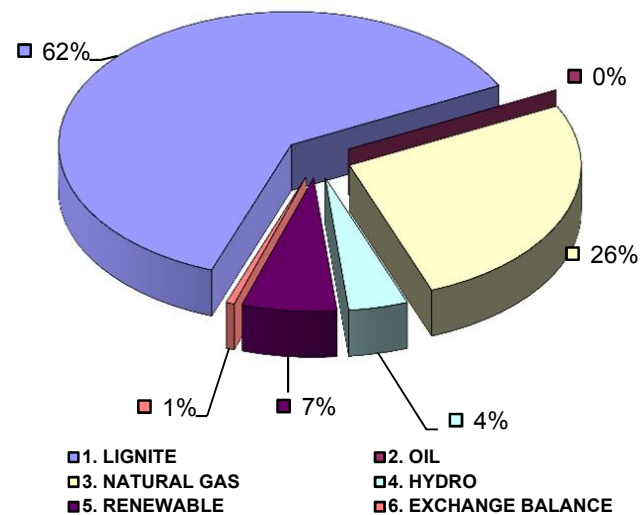
**INDEPENDENT POWER
TRANSMISSION OPERATOR**

**MONTHLY ELECTRICITY PRODUCTION & EXCHANGE BALANCE
(MWh)**

Month : **OCTOBER 2012**

TOTAL PRODUCTION & INTERCONNECTIONS	MONTH TOTALS	(%)
TOT.PROD. & INTERCON.	3.749.200	100%
1. LIGNITE	2.328.425	62,10%
2. OIL	4	0,00%
3. NATURAL GAS	996.304	26,57%
4. HYDRO	155.178	4,14%
5. RENEWABLE	247.719	6,61%
6. EXCHANGE BALANCE	21.571	0,58%

MONTHLY ELECTRICITY PRODUCTION





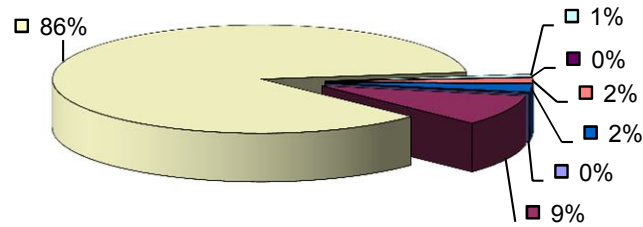
MONTHLY PEAK LOAD ANALYSIS

DAY 20121002

ELECTRICITY CONSUMPTION DURING PEAK LOAD		
	TOTAL	6.973 100%
1. ELECTRICITY SECTOR	17	0,25%
2. HV INDUSTRIAL CUSTOMERS	637	9,13%
3. DISTRIBUTION NETWORK	5.985	85,83%
4. AUTOPRODUCERS	62	0,89%
5. PUMPING	0	0,00%
6. MINES	110	1,58%
7. SYSTEM LOSSES	162	2,32%

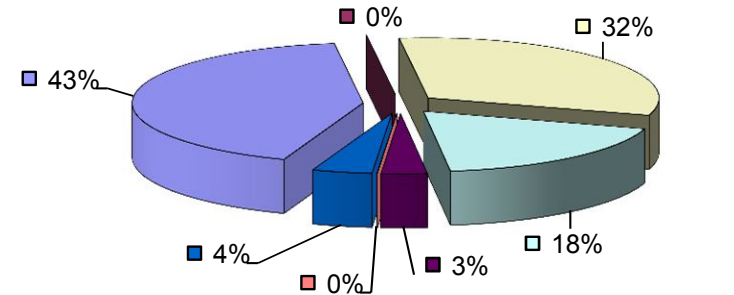
ELECTRICITY PRODUCTION DURING PEAK LOAD		
	TOTAL	6.973 100%
1. LIGNITE	2.960	42,45%
2. OIL	0	0,00%
3. NATURAL GAS	2.211	31,70%
4. HYDRO	1.286	18,44%
5. RENEWABLE	222	3,19%
6. OTHER SOURCES	2	0,03%
7. EXCHANGE BALANCE	292	4,19%

Electricity consumption during peak load



- 1. ELECTRICITY SECTOR
- 2. HV INDUSTRIAL CUSTOMERS
- 3. DISTRIBUTION NETWORK
- 4. AUTOPRODUCERS
- 5. PUMPING
- 6. MINES
- 7. SYSTEM LOSSES

Electricity production during peak load



- 1. LIGNITE
- 2. OIL
- 3. NATURAL GAS
- 4. HYDRO
- 5. RENEWABLE
- 6. OTHER SOURCES
- 7. EXCHANGE BALANCE