



INDEPENDENT POWER
TRANSMISSION OPERATOR

TRANSMISSION SYSTEM ENERGY BALANCE MONTHLY
REPORT

Info :K. Petsinis +30 210 9466888

	APRIL 2012	COMPARED TO LAST YEAR(%)	JANUARY - APRIL 2012	COMPARED TO LAST YEAR (%)
PRODUCTION AND EXCHANGE BALANCE (MWh)				
TOTAL PRODUCTION & EXCHANGE BALANCE	3.406.325	-9,00%	16.549.183	-0,71%
TOTAL NET PRODUCTION	3.329.081	-4,10%	16.069.126	2,85%
CLASSIFICATION				
LIGNITE	1.935.057	4,26%	8.806.703	-2,59%
OIL	1	-97,14%	66.163	25249,95%
NATURAL GAS	817.871	-28,65%	5.122.791	13,02%
HYDRO	260.972	12,28%	1.008.855	-19,93%
RENEWABLE AND OTHER SOURCES *	315.179	33,27%	1.064.613	34,79%
EXCHANGE BALANCE	77.244	-71,59%	480.057	-54,06%
IMPORTS	518.051		2.053.113	
from TURKEY	176.177		753.319	
from ALBANIA	103		8.585	
from FYROM	136.711		315.056	
from BULGARIA	203.314		760.858	
from ITALY	1.746		215.295	
EXPORTS	440.807		1.573.056	
to TURKEY	5		103	
to ALBANIA	134.684		726.557	
to FYROM	1.789		101.659	
to BULGARIA	0		2.126	
to ITALY	304.329		742.611	

CONSUMPTION (MWh)				
TOTAL CONSUMPTION	3.406.325	-9,00%	16.549.183	-0,71%
NET CONSUMPTION	3.389.151	-9,01%	16.381.742	-0,95%
PUMPING	17.174		167.441	
CLASSIFICATION				
CONSUMPTION OF ELECTRICITY SECTOR	15.794		54.524	
HV INDUSTRIAL CUSTOMERS	472.725	-7,06%	2.093.570	-4,88%
DISTRIBUTION NETWORK	2.728.077	-9,96%	13.496.272	-0,29%
AUTOPRODUCERS **	0		0	
PUMPING	17.174		167.441	
MINES	74.660	-5,79%	312.197	-4,99%
SYSTEM LOSSES	97.895		425.179	

SYSTEM POWER (MW)				
SYSTEM INSTANT PEAK LOAD	6.895	***	8.734	***
date / time of peak load	10/04/12	21:00	31/01/12	20:00
Athens (ROUF) temperature at peak time (°C)	8		1	
HOURLY AVERAGE LOAD IN ATTIKI	2.449		3429	

NOTE:

- * Includes only the HV substations
- ** Autoproducers are included in the HV INDUSTRIAL CUSTOMERS
- *** Value from SCADA SYSTEM



**INDEPENDENT POWER
TRANSMISSION OPERATOR**

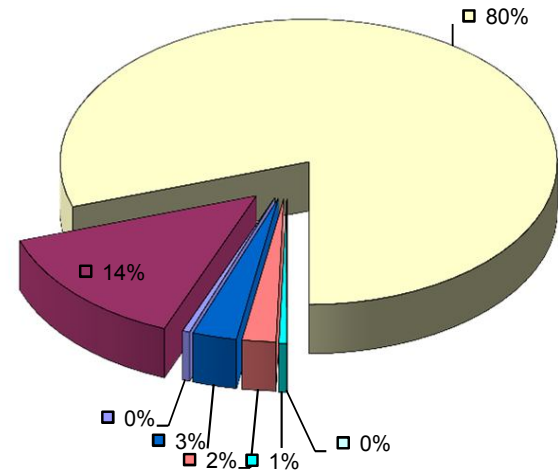
TOTAL ELECTRICITY CONSUMPTION

(MWh)

Month : **APRIL 2012**

TOTAL ELECTRICITY CONSUMPTION	MONTHLY TOTALS	(%)
CLASSIFICATION	3.406.325	100,00%
1. ELECTRICITY SECTOR	15.794	0,46%
2. HV INDUSTRIAL CUSTOMERS	472.725	13,88%
3. DISTRIBUTION NETWORK	2.728.077	80,09%
4. AUTOPRODUCERS	0	0,00%
5. PUMPING	17.174	0,50%
6. MINES	74.660	2,19%
7. SYSTEM LOSSES	97.895	2,87%

MONTHLY ELECTRICITY CONSUMPTION



- 1. ELECTRICITY SECTOR
- 2. HV INDUSTRIAL CUSTOMERS
- 3. DISTRIBUTION NETWORK
- 4. AUTOPRODUCERS
- 5. PUMPING
- 6. MINES
- 7. SYSTEM LOSSES



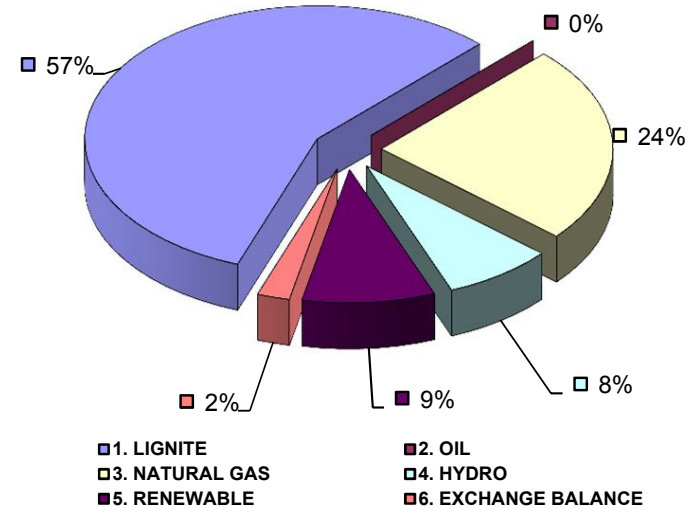
**INDEPENDENT POWER
TRANSMISSION OPERATOR**

**MONTHLY ELECTRICITY PRODUCTION & EXCHANGE BALANCE
(MWh)**

Month : **APRIL 2012**

TOTAL PRODUCTION & INTERCONNECTIONS	MONTH TOTALS	(%)
TOT.PROD. & INTERCON.	3.406.325	100%
1. LIGNITE	1.935.057	56,81%
2. OIL	1	0,00%
3. NATURAL GAS	817.871	24,01%
4. HYDRO	260.972	7,66%
5. RENEWABLE	315.179	9,25%
6. EXCHANGE BALANCE	77.244	2,27%

MONTHLY ELECTRICITY PRODUCTION





MONTHLY PEAK LOAD ANALYSIS

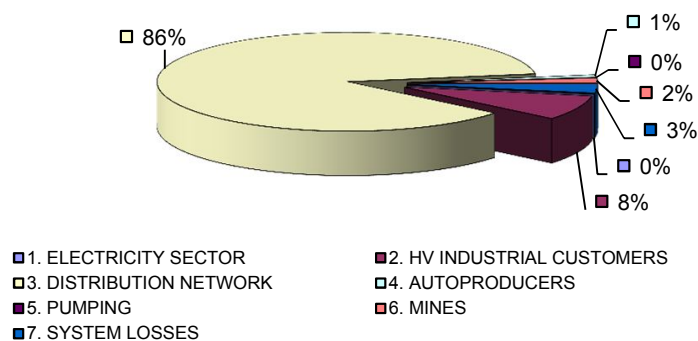
DAY : 20120410

Hourly average peak load			
MW	6.726	Hour	21

ELECTRICITY CONSUMPTION DURING PEAK LOAD		
TOTAL	6.726	100%
1. ELECTRICITY SECTOR	9	0,13%
2. HV INDUSTRIAL CUSTOMERS	542	8,06%
3. DISTRIBUTION NETWORK	5.816	86,47%
4. AUTOPRODUCERS	56	0,83%
5. PUMPING	0	0,00%
6. MINES	113	1,68%
7. SYSTEM LOSSES	190	2,82%

ELECTRICITY PRODUCTION DURING PEAK LOAD		
TOTAL	6.726	100%
1. LIGNITE	3.394	50,46%
2. OIL	0	0,00%
3. NATURAL GAS	1.932	28,72%
4. HYDRO	971	14,44%
5. RENEWABLE	400	5,95%
6. OTHER SOURCES	1	0,01%
7. EXCHANGE BALANCE	28	0,42%

Electricity consumption during peak load



Electricity production during peak load

